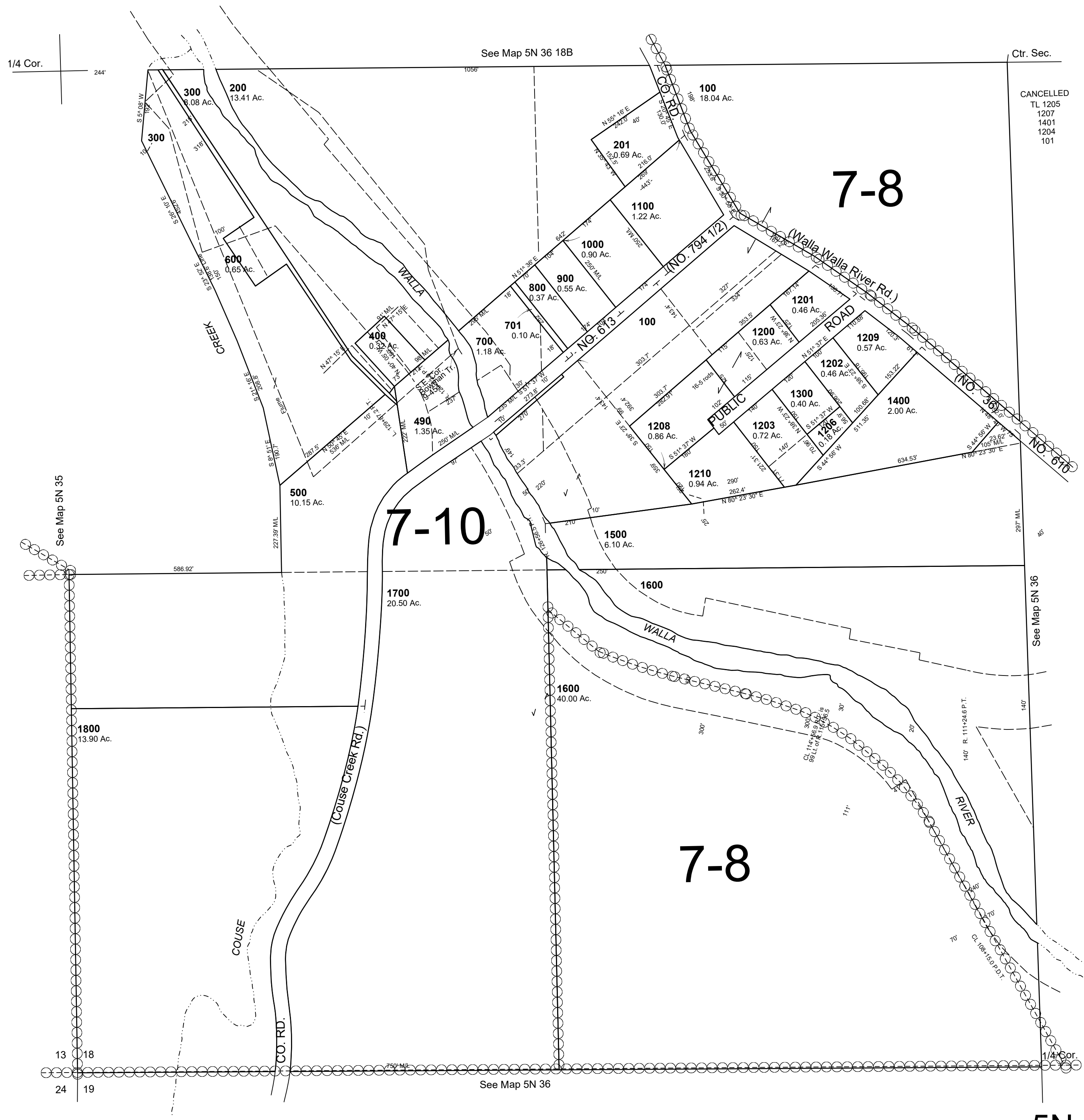


This map was prepared for Assessment and Taxation purposes only and has NOT been prepared for legal engineering or surveying purposes.

SW 1/4 SEC 18 T5N R36E WM
 UMATILLA COUNTY
 SCALE 1"=200'

5N 36 18C

AERIAL PHOTO NO. 6P-120



CANCELLED
 TL 1205
 1207
 1401
 1204
 101

Revised: 08-27-12

5N 36 18C