

This map was prepared for Assessment & Taxation purposes only and was NOT prepared nor is it suitable for legal, engineering or surveying purposes.

Cancelled Tax Lots

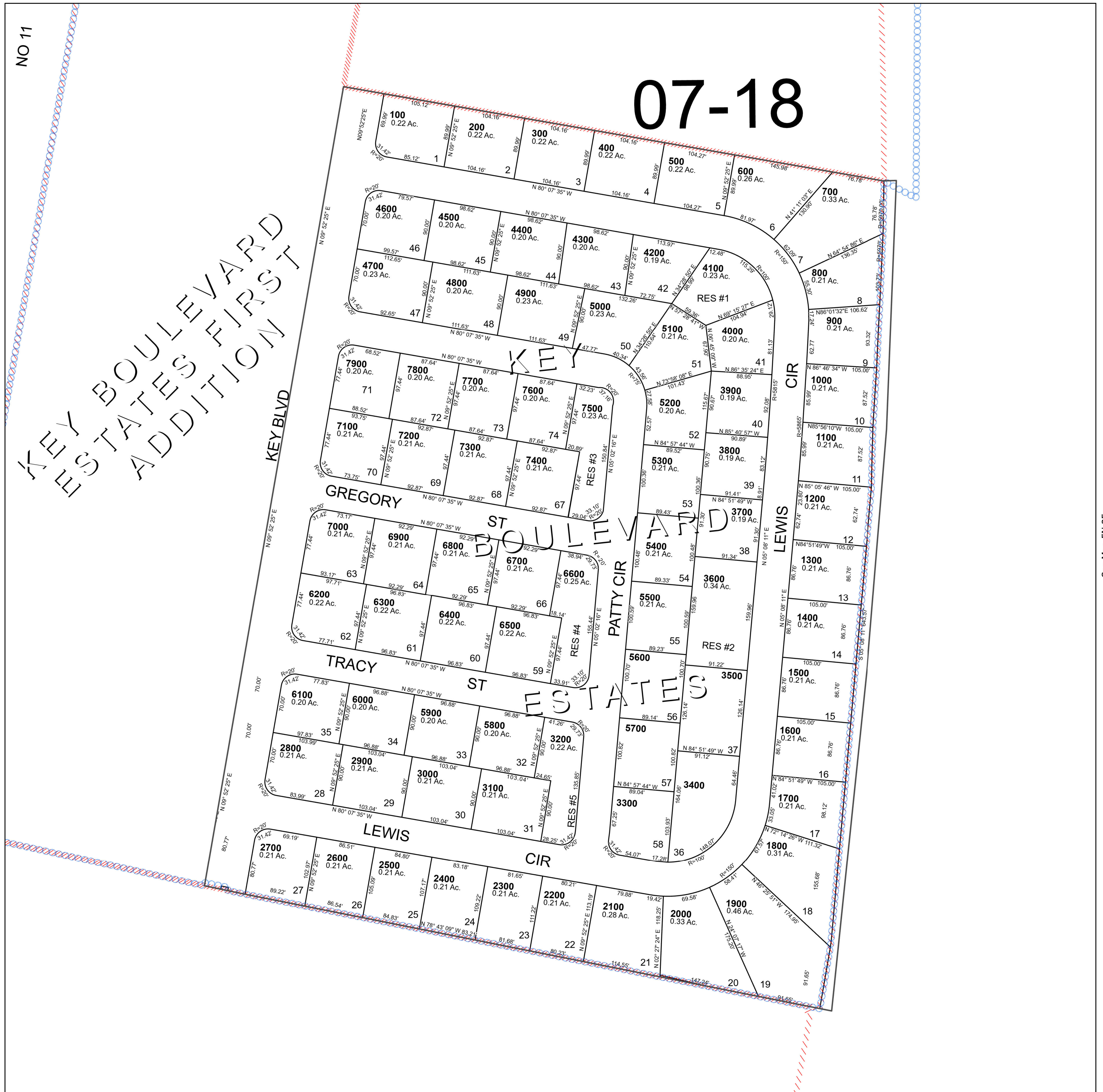
NW 1/4 SE 1/4 SEC 13 T5N R35E WM UMATILLA COUNTY SCALE 1" = 100'

Milton-Freewater

5N 35 13DB

See Map 5N 35 13AC

07-18



See Map 5N 35 13

See Map 5N 35