

This map was prepared for Assessment & Taxation purposes only and was NOT prepared nor is it suitable for legal, engineering or surveying purposes.

Cancelled Tax Lots

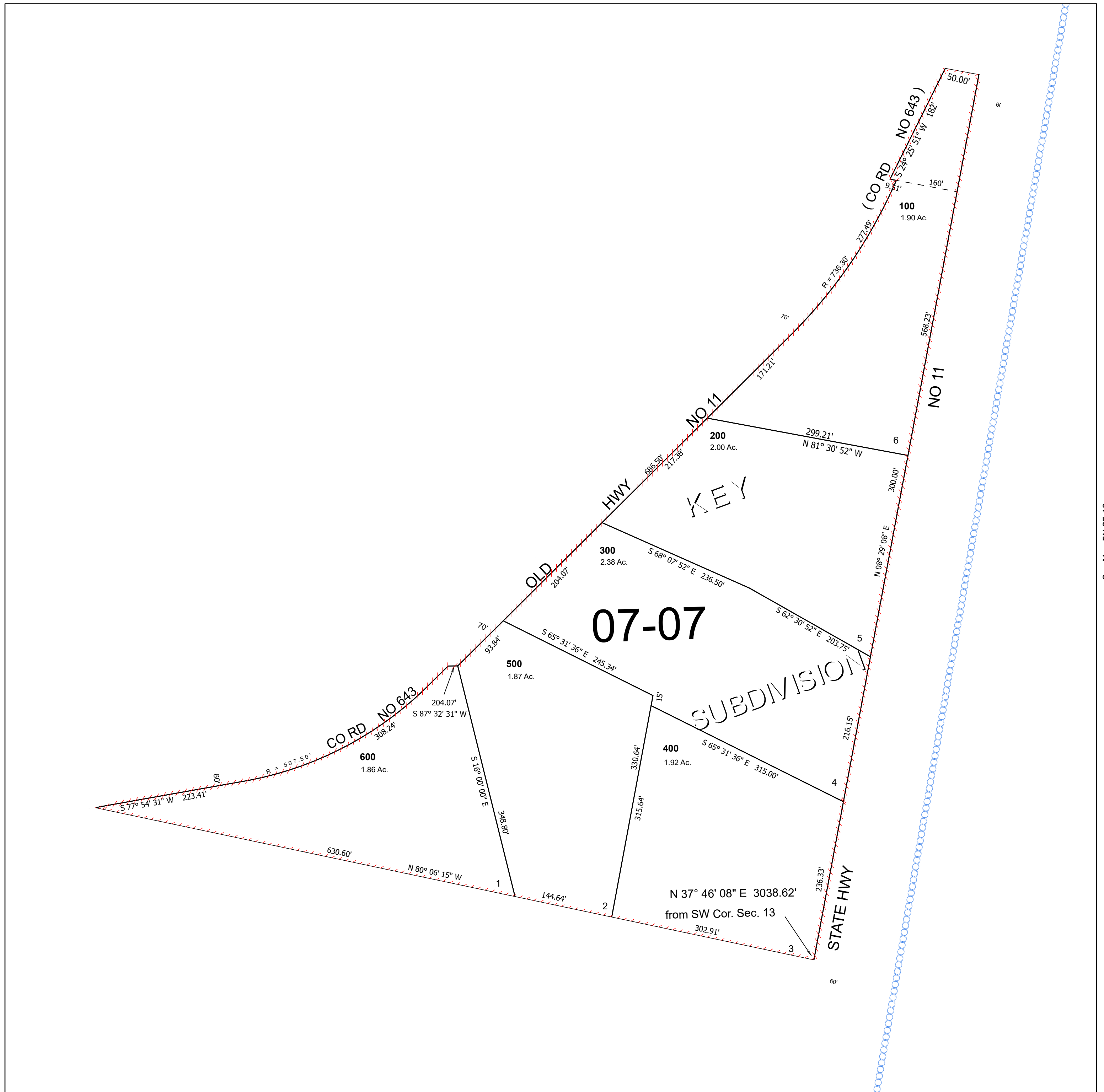
NE 1/4 SW 1/4 SEC 13 T5N R35E WM

UMATILLA COUNTY

SCALE 1" = 100'

See Map 5N 35 13

5N 35 13CA



See Map 5N 35 13

See Map 5N 35 13

Revised 11/27/2024

See Map 5N 35

5N 35 13CA