

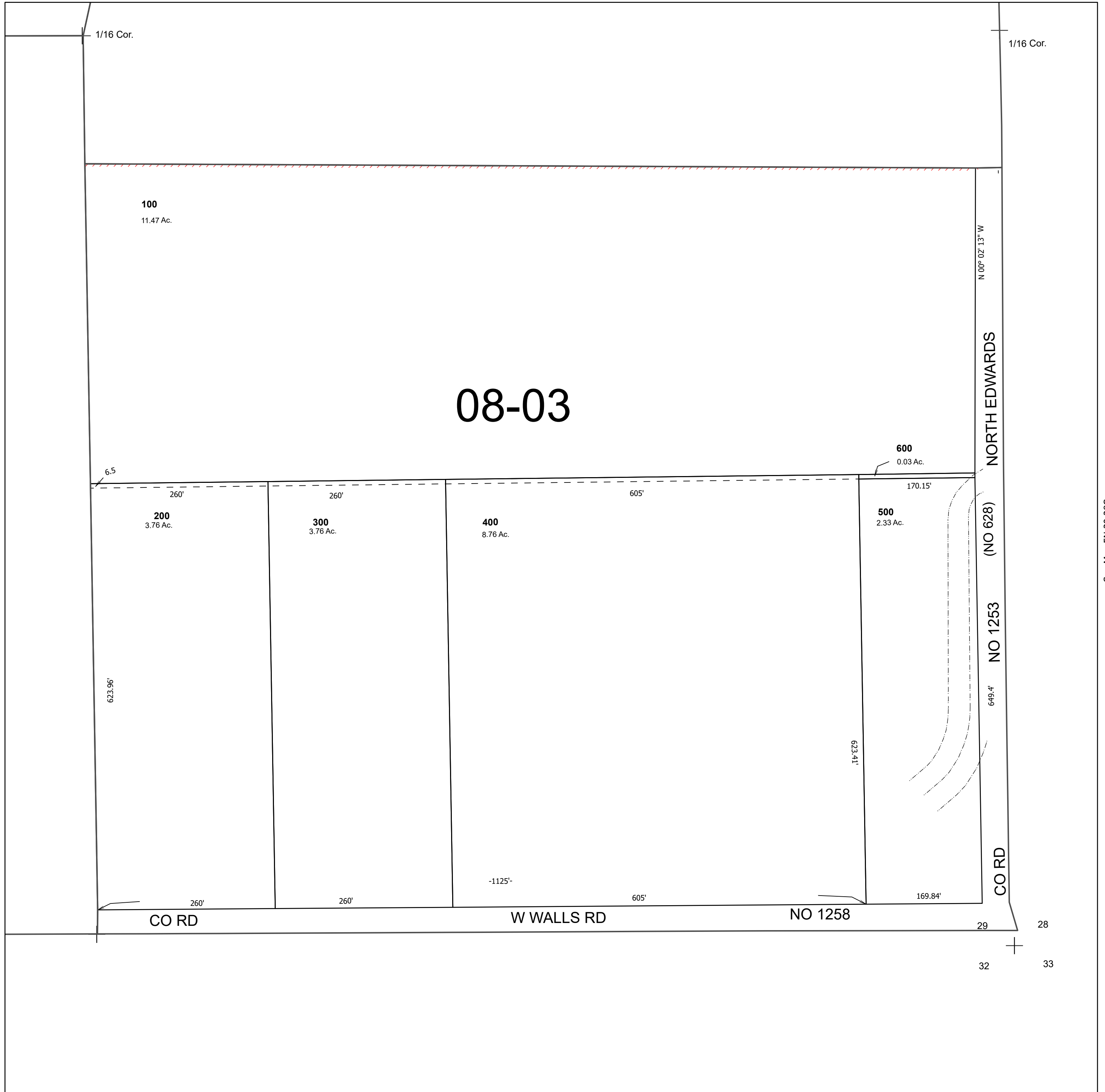
This map was prepared for Assessment & Taxation purposes only and was NOT prepared nor is it suitable for legal, engineering or surveying purposes.

Cancelled Tax Lots

# SE 1/4 SE 1/4 SEC 29 T5N R29E WM UMATILLA COUNTY SCALE 1" = 100'

See Map 5N 29 29DA

## 5N 29 29DD



See Map 5N 29 29DC

See Map 5N 29 28C

Revised 2/28/2025

See Map 5N 29 32

## 5N 29 29DD