

This map was prepared for Assessment & Taxation purposes only and was NOT prepared nor is it suitable for legal, engineering or surveying purposes.

SW 1/4 SEC 35 T5N R28E WM UMATILLA COUNTY

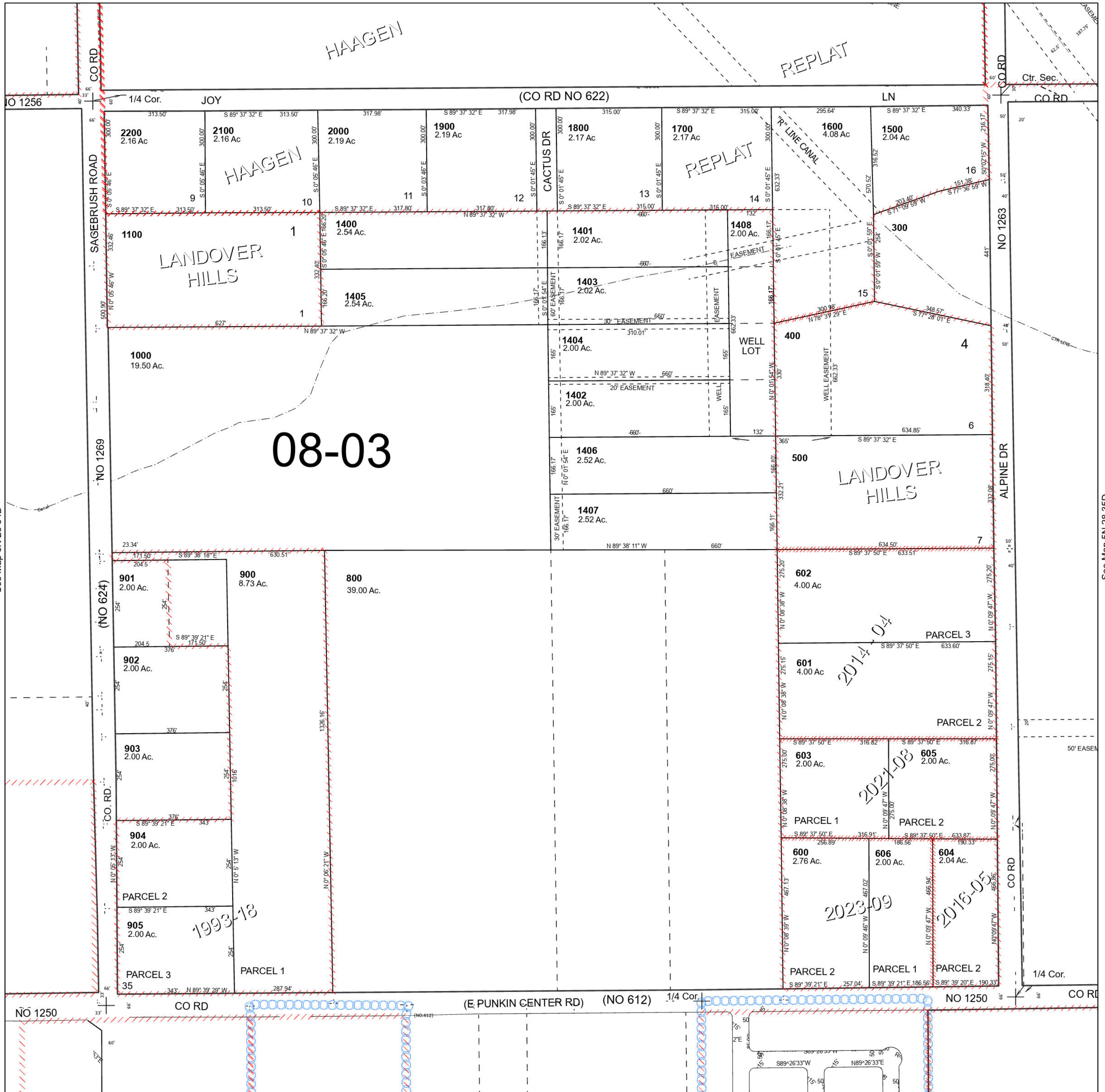
5N 28 35C

SCALE 1" = 200'

See Map 5N 28 35B

Cancelled Tax Lots

- 100
- 200
- 700
- 906
- 1200
- 1300
- 1409
- 1410
- 1411



See Map 5N 28 34D

See Map 5N 28 35D

Revised 7/14/2023

See Map 4N 28 02B

5N 28 35C