

This map was prepared for Assessment & Taxation purposes only and was NOT prepared nor is it suitable for legal, engineering or surveying purposes.

NW 1/4 SEC 34 T5N R28E WM UMATILLA COUNTY

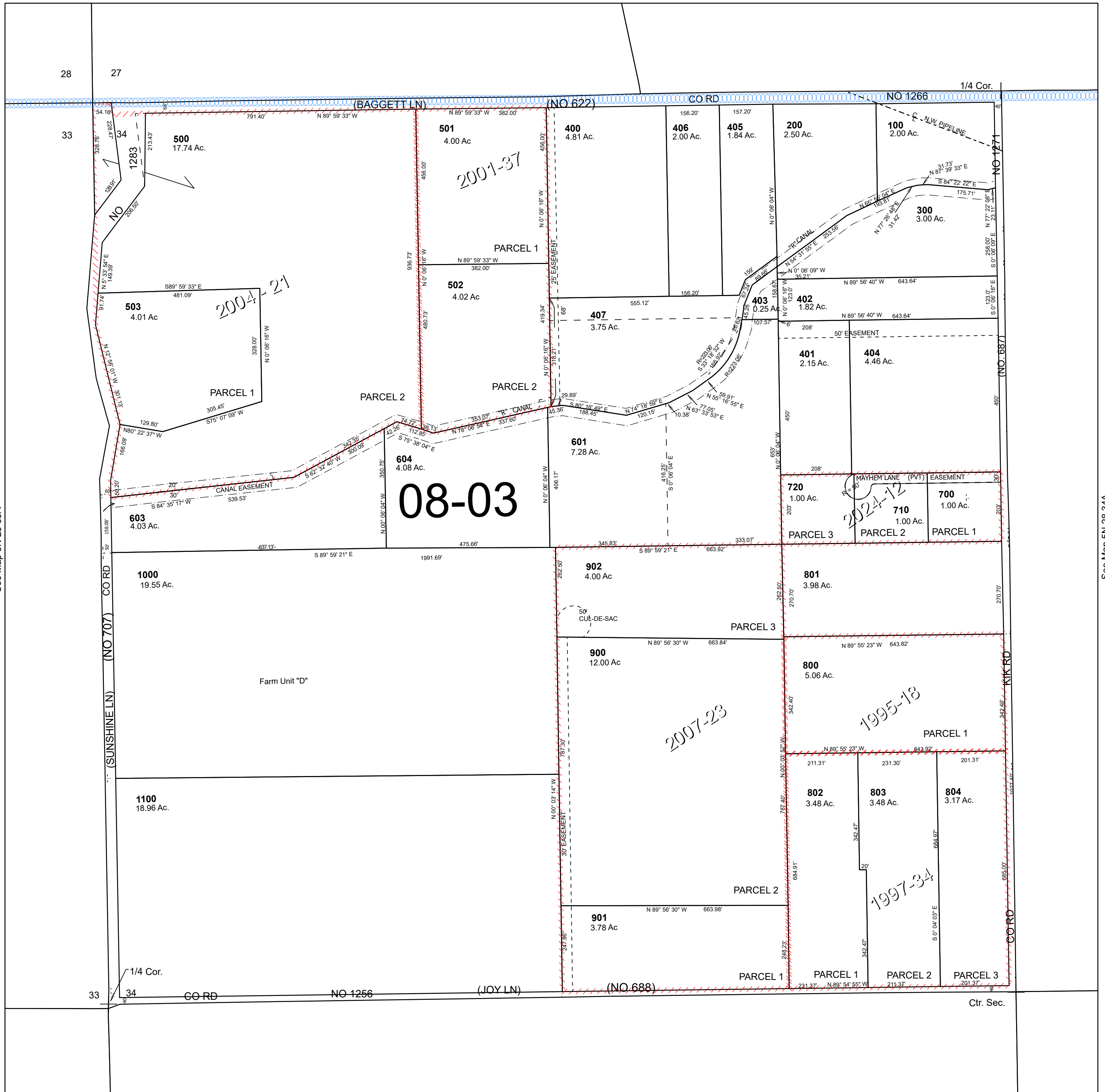
5N 28 34B

SCALE 1" = 200'

Cancelled Tax Lots

- 600
- 602
- 605
- 606

See Map 5N 28 27C



See Map 5N 28 33A

See Map 5N 28 34A

Revised 8/6/2024

See Map 5N 28 34C

5N 28 34B