

This map was prepared for Assessment & Taxation purposes only and was NOT prepared nor is it suitable for legal, engineering or surveying purposes.

NW 1/4 SEC 27 T5N R28E WM UMATILLA COUNTY

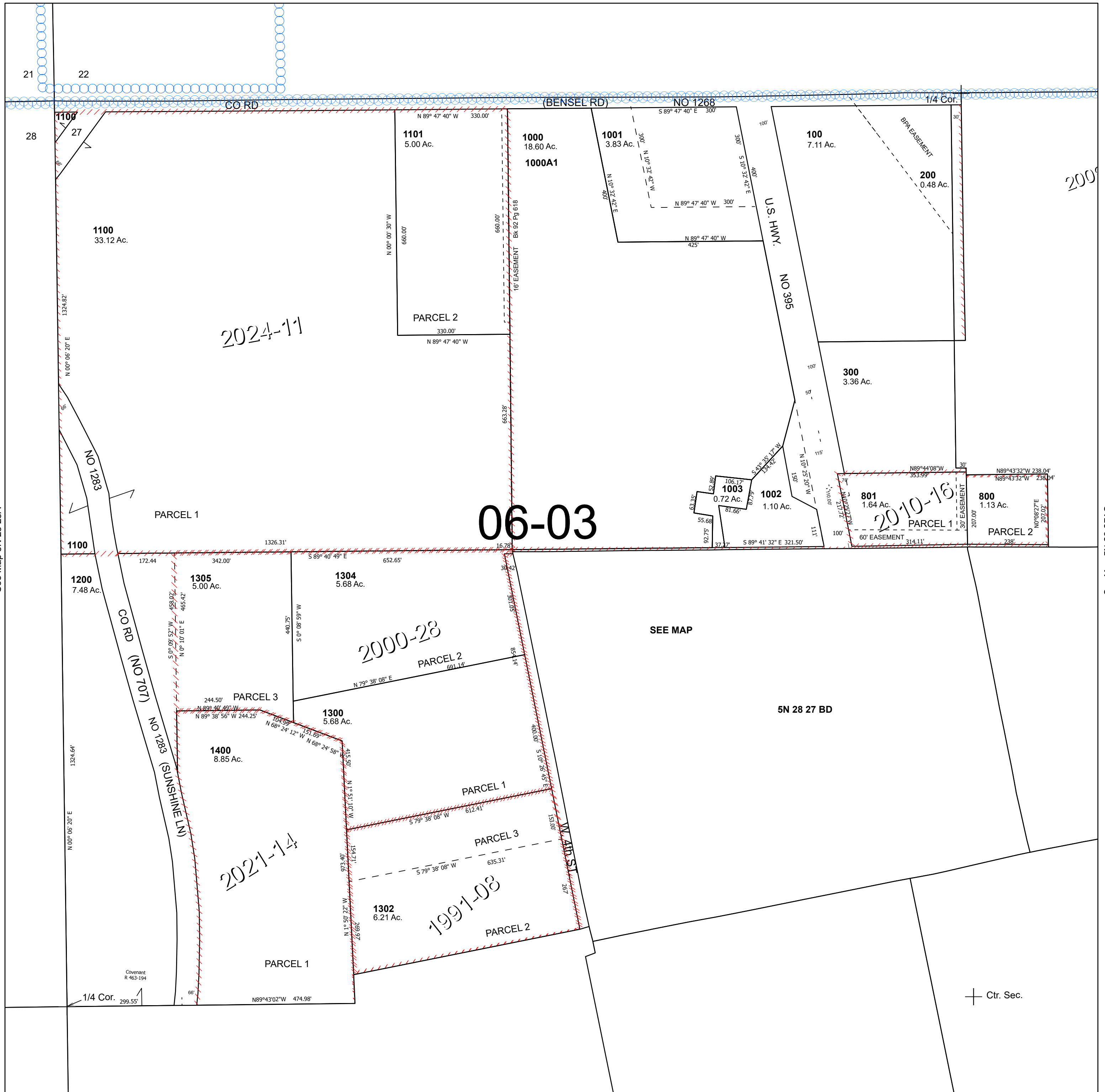
5N 28 27B

SCALE 1" = 200'

See Map 5N 28 22

Cancelled Tax Lots

- 400
- 500
- 600
- 700
- 900
- 1201
- 1301
- 1303



See Map 5N 28 28A

See Map 5N 28 27AC

Revised 11/13/2024

See Map 5N 28 27C

5N 28 27B