

This map was prepared for Assessment & Taxation purposes only and was NOT prepared nor is it suitable for legal, engineering or surveying purposes.

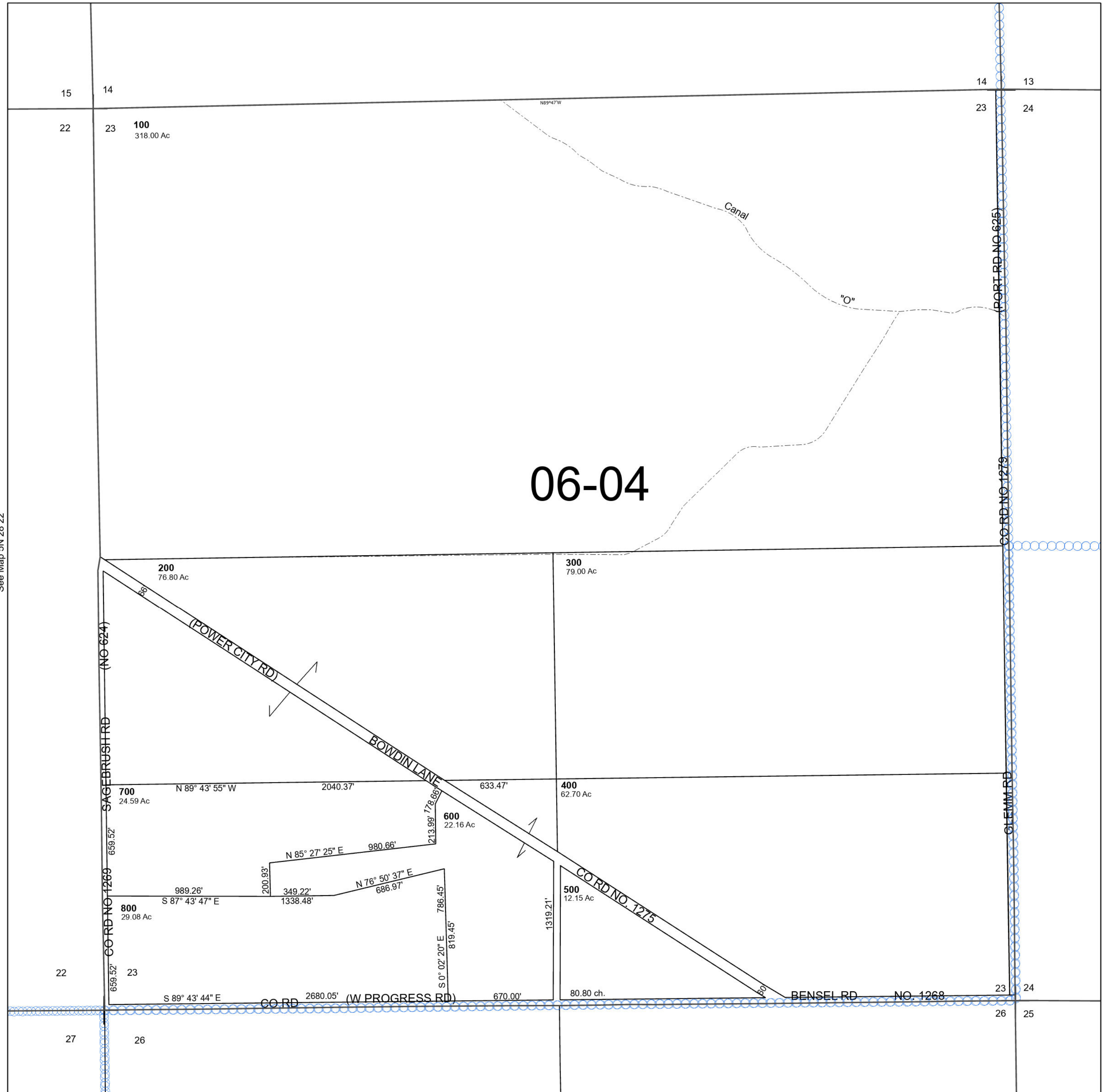
Cancelled Tax Lots

# SEC 23 T5N R28E WM UMATILLA COUNTY

## 5N 28 23

SCALE 1" = 400'

See Map 5N 28 14



See Map 5N 28 22

See Map 5N 28 24

Revised 5/31/2024

See Map 5N 28 26A

## 5N 28 23