

This map was prepared for Assessment & Taxation purposes only and was NOT prepared nor is it suitable for legal, engineering or surveying purposes.

# NE 1/4 SE 1/4 SEC 18 T5N R28E WM

## UMATILLA COUNTY

SCALE 1" = 100'

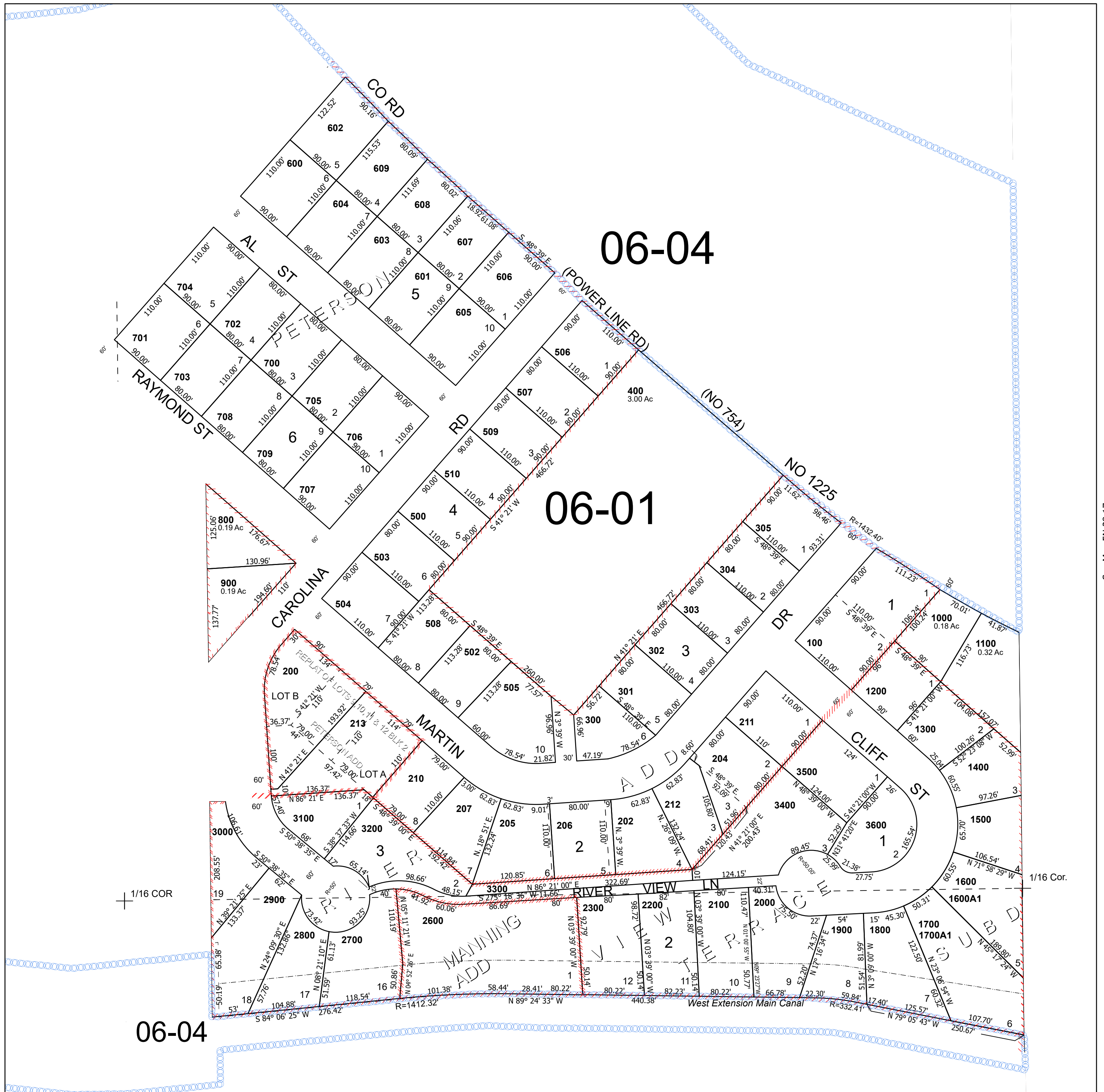
Umatilla

### 5N 28 18DA

Cancelled Tax Lots

- 101
- 201
- 203
- 208
- 209
- 501
- 2400
- 2500
- 3700

See Map 5N 28 18



See Map 5N 28 18DB

See Map 5N 28 17

Revised 8/30/2024

See Map 5N 28 18DD

### 5N 28 18DA