

This map was prepared for Assessment & Taxation purposes only and was NOT prepared nor is it suitable for legal, engineering or surveying purposes.

SEC 16 T5N R28E WM UMATILLA COUNTY

5N 28 16

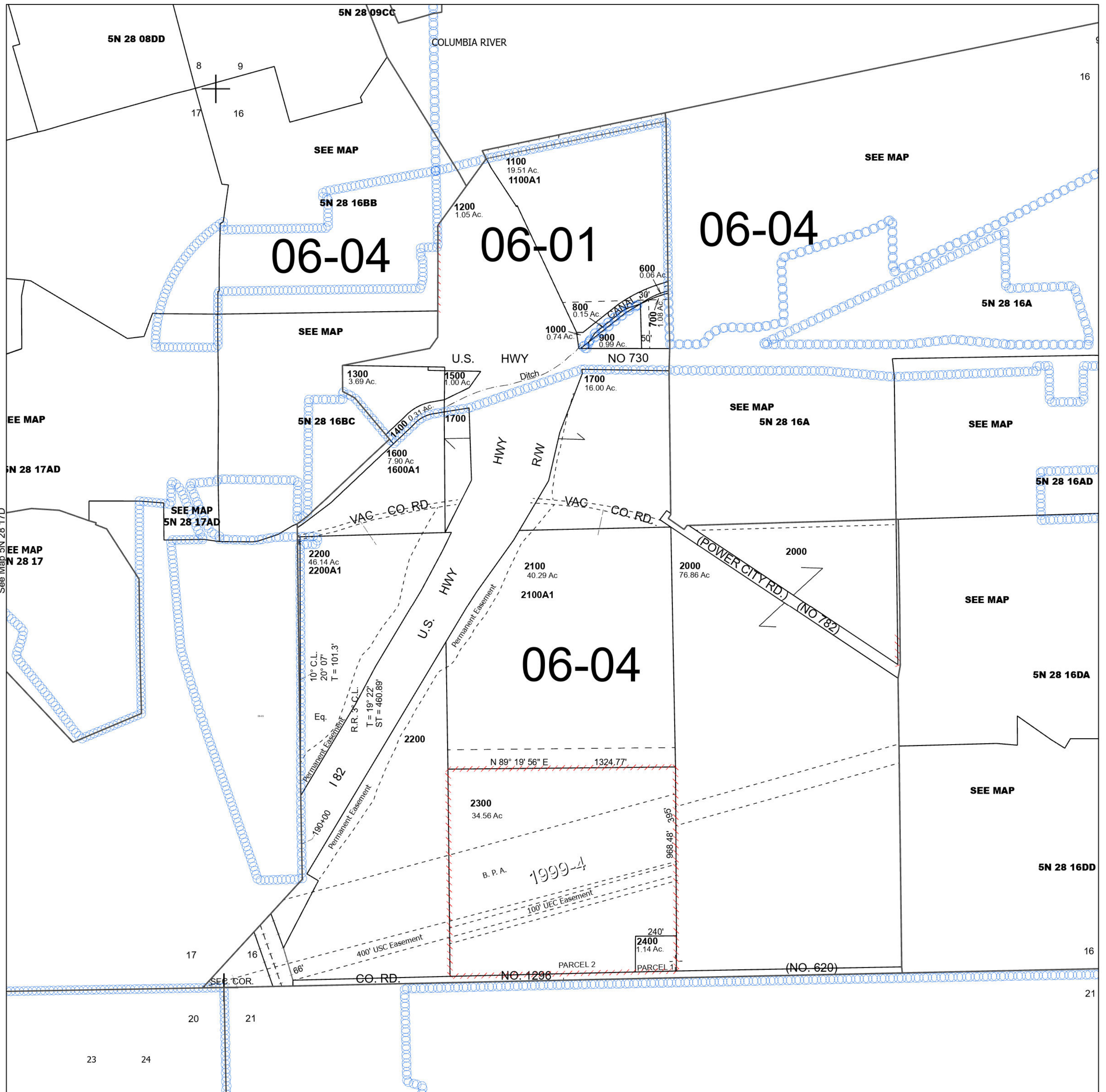
Umatilla

SCALE 1" = 400'

See Map 5N 28 09

Cancelled Tax Lots

- 100
- 200
- 300
- 400
- 500
- 1800
- 1900



Revised 6/7/2024

See Map 5N 28 21

5N 28 16