

This map was prepared for Assessment & Taxation purposes only and was NOT prepared nor is it suitable for legal, engineering or surveying purposes.

T5N R28E WM UMATILLA COUNTY

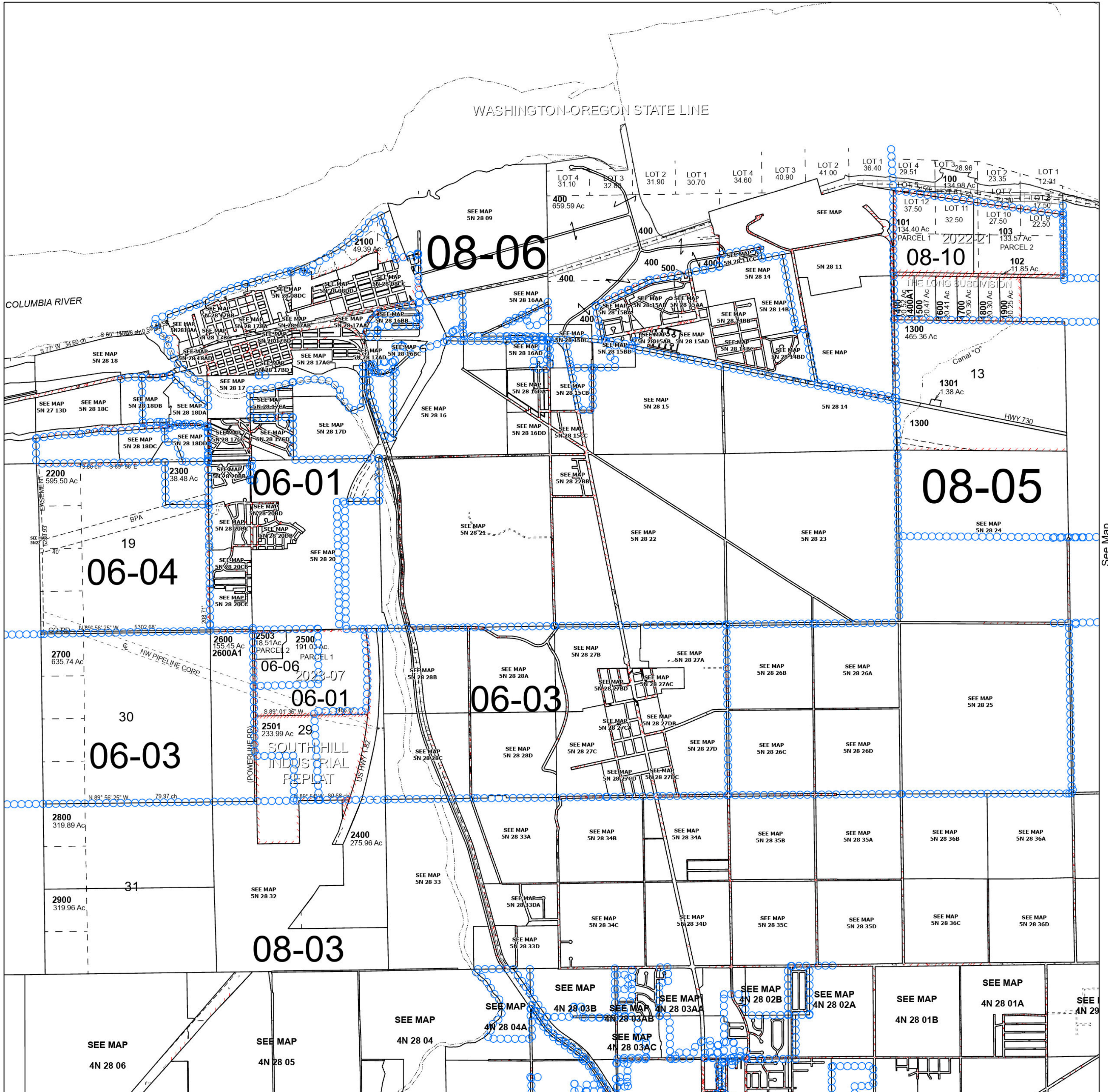
5N 28

SCALE 1" = 2,000'

Cancelled Tax Lots

- 90000
- 90101
- 90102
- 90103
- 90104
- 90105
- 90106
- 90107
- 90108

See Map



See Map

See Map

See Map

5N 28