

This map was prepared for Assessment & Taxation purposes only and was NOT prepared nor is it suitable for legal, engineering or surveying purposes.

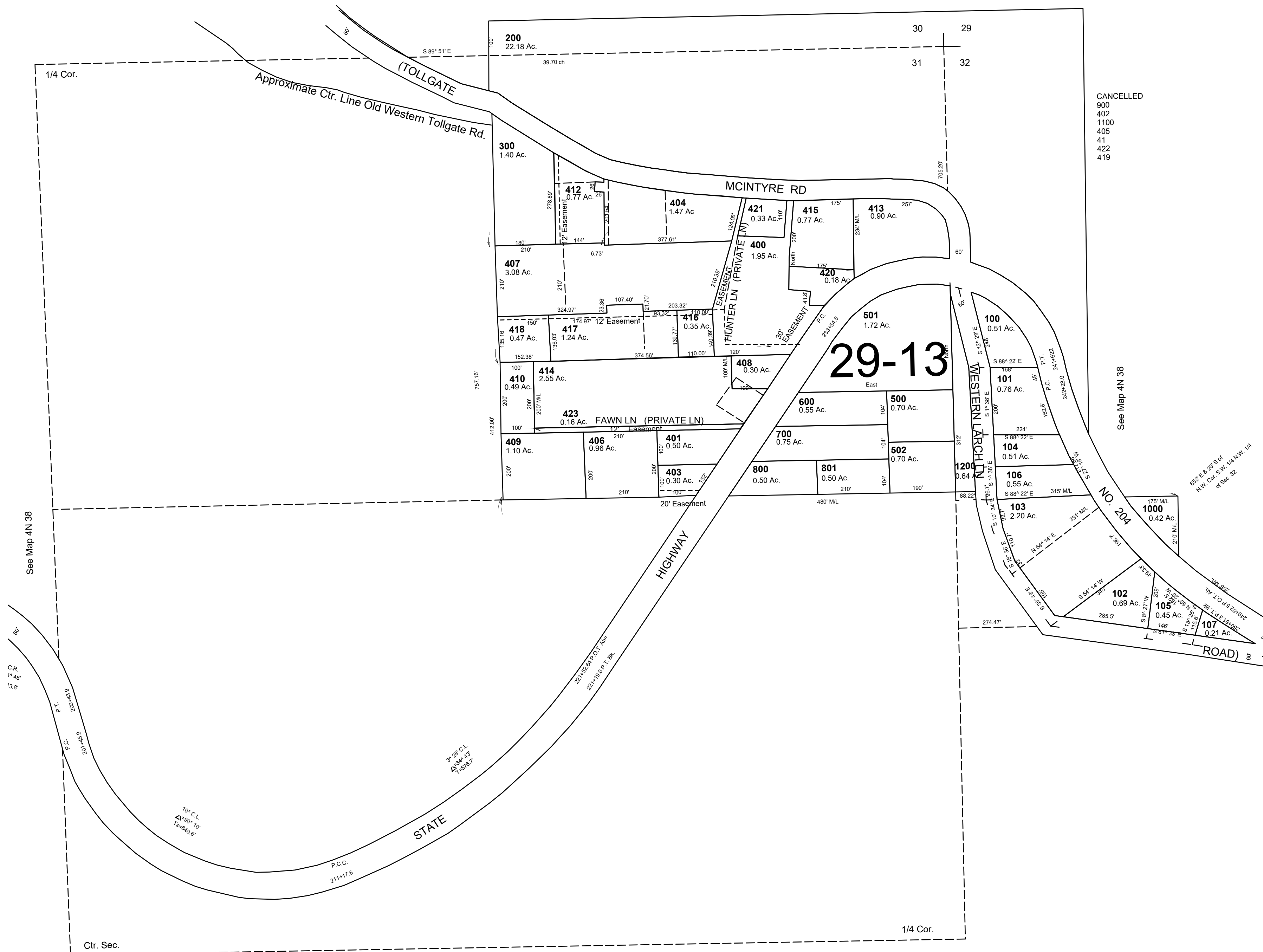
# NE1/4 SEC 31 T4N R38E WM UMATILLA COUNTY

## 4N 38 31A

AERIAL PHOTO NO. 9P-32

SCALE 1" = 200'

See Map 4N 38



CANCELLED  
900  
402  
1100  
405  
41  
422  
419

See Map 4N 38

See Map 4N 38

See Map 4N 38

Revised: 06-25-18

## 4N 38 31A