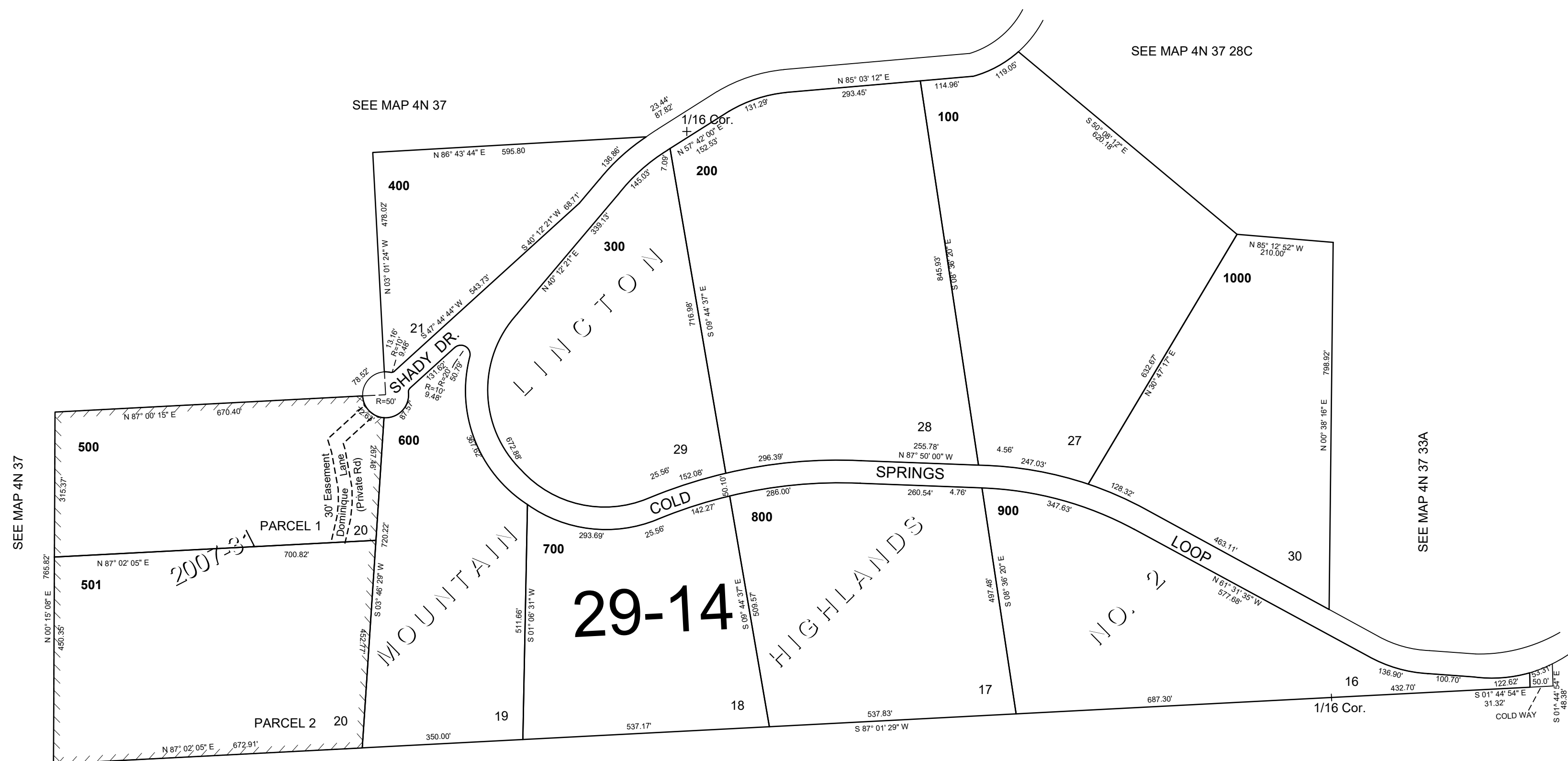


This map was prepared for Assessment & Taxation purposes only and was NOT prepared nor is it suitable for legal, engineering or surveying purposes.

NW 1/4 SEC 33 T4N R37E WM
UMATILLA COUNTY
SCALE 1"=200'

Revised: 11/26/07

4N 37 33B
AERIAL PHOTO NO 9P-37



SEE MAP 4N 37

4N 37 33B