

This map was prepared for assessment purposes

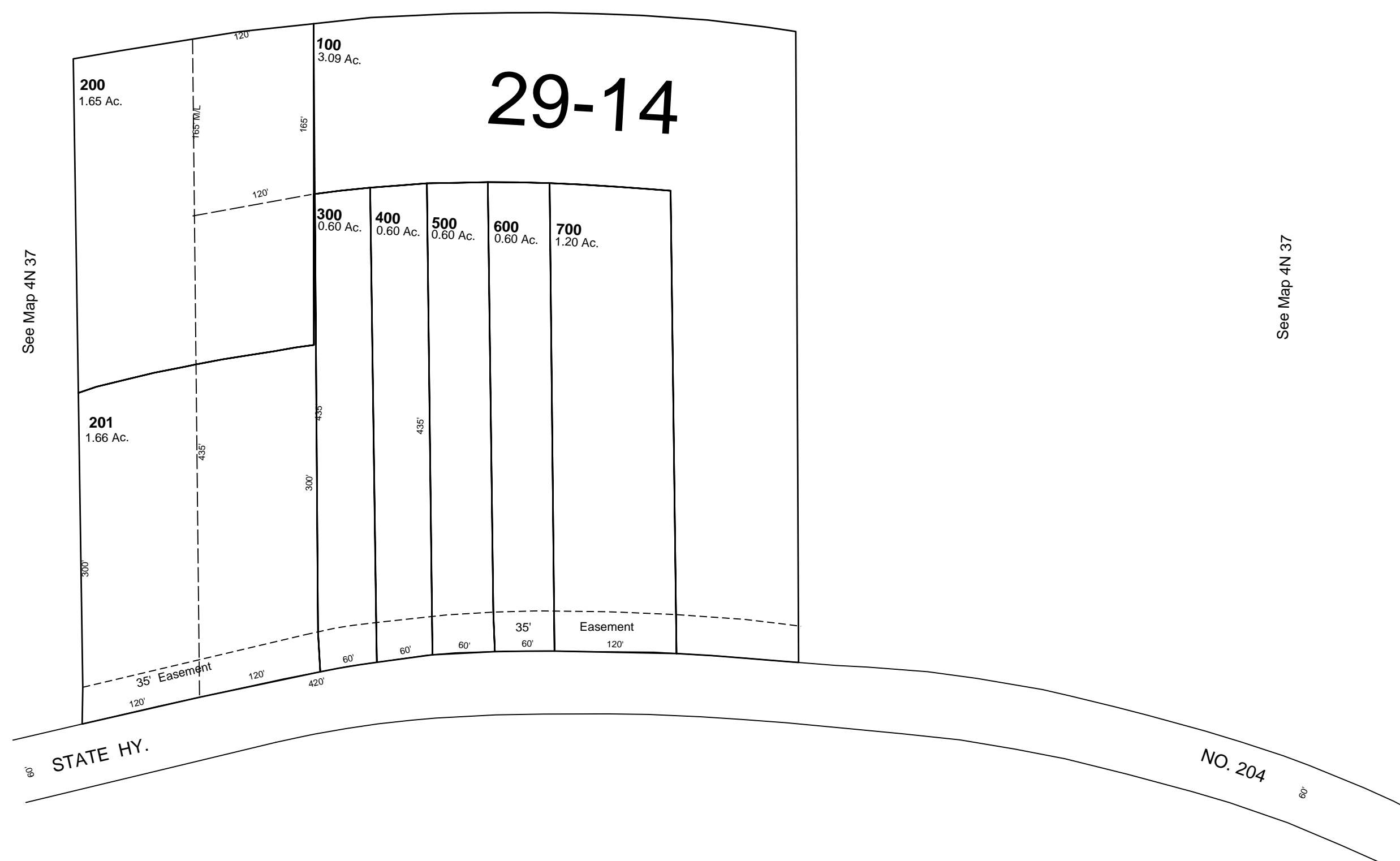
NW 1/4 SW 1/4 SEC 28 T4N R37E WM
UMATILLA COUNTY
SCALE 1"=100'

9/19/06

4N 37 28CB
AERIAL PHOTO NO. 9P-37 & 38

See Map 4N 37

CANCELLED
TL 101



See Map 4N 37

See Map 4N 37

1/16 Cor.

See Map 4N 37

4N 37 28CB