

This map was prepared for assessment purposes

NE1/4 SEC 36 T4N R36E WM  
UMATILLA COUNTY

3-16-07

4N 36 36A

AERIAL PHOTO NO. 5P 68-70 & 90-92

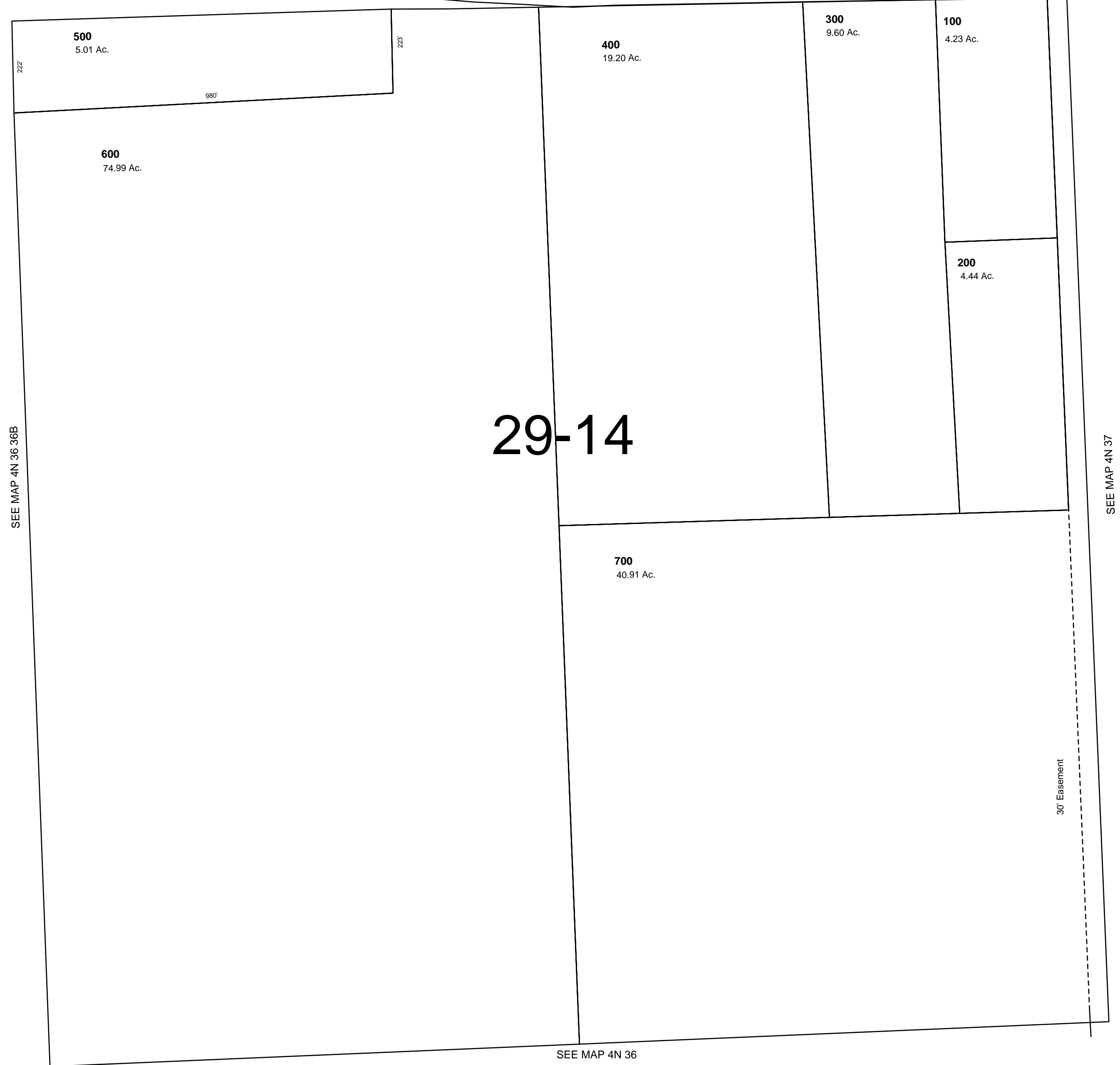
1"=200'

SEE MAP 4N 36 25DC

SEE MAP 4N 36 25DD

STATE HWY 204

CO. RD. NO. 638



4N 36 36A