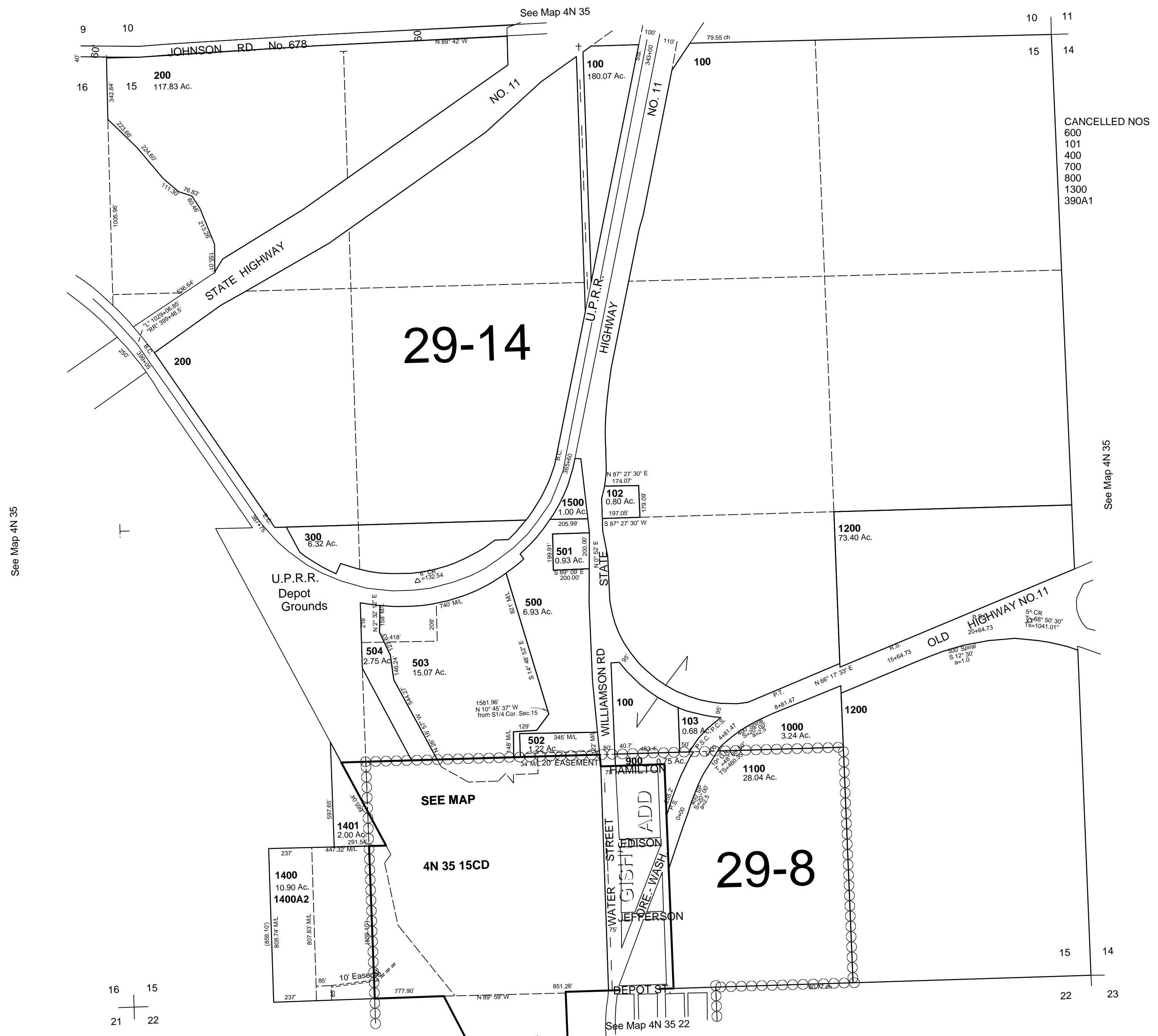


This map was prepared for Assessment & Taxation purposes only and was NOT prepared nor is it suitable for legal, engineering or surveying purposes.

SEC 15 T4N R35E WM UMATILLA COUNTY SCALE 1"=400'

4N 35 15
AERIAL PHOTO NO. 5P-97 & 98



CANCELLED NOS
600
101
400
700
800
1300
390A1

See Map 4N 35

See Map 4N 35

See Map 4N 35 22

Revised: 11-13-12

4N 35 15