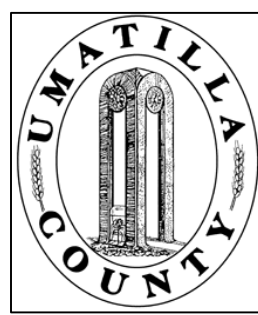


This map was prepared for Assessment & Taxation purposes only and was NOT prepared nor is it suitable for legal, engineering or surveying purposes.

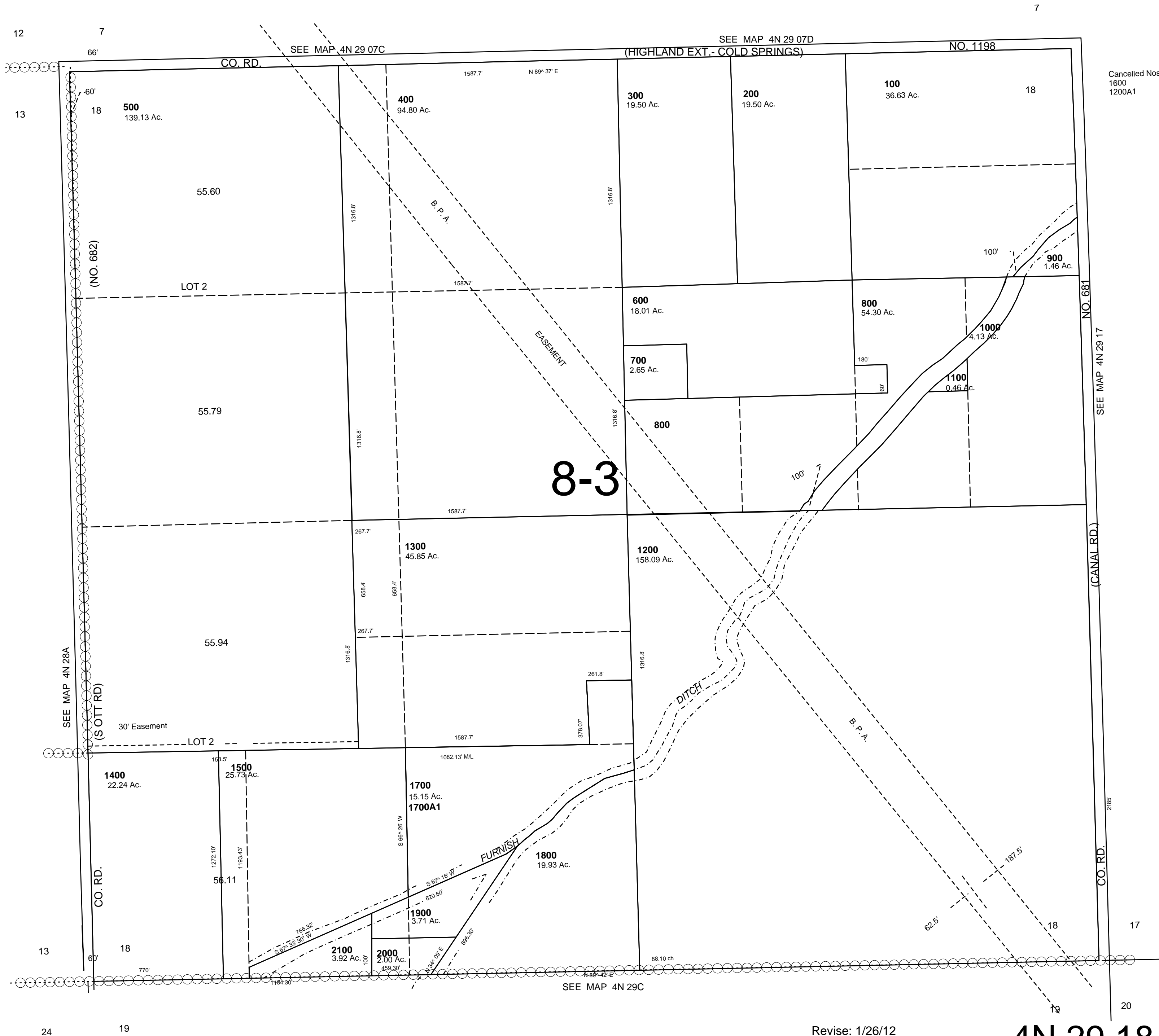


SEC 18 T4N R29E WM UMATILLA COUNTY

SCALE: 1" = 400'

AERIAL PHOTO NO. NZ-2P 18-20 & 1P 124-126

4N 29 18



Cancelled Nos
1600
1200A1

Revise: 1/26/12

4N 29 18