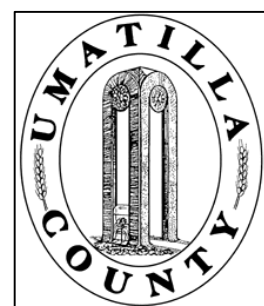


This map was prepared for Assessment & Taxation purposes only and was NOT prepared nor is it suitable for legal, engineering or surveying purposes.

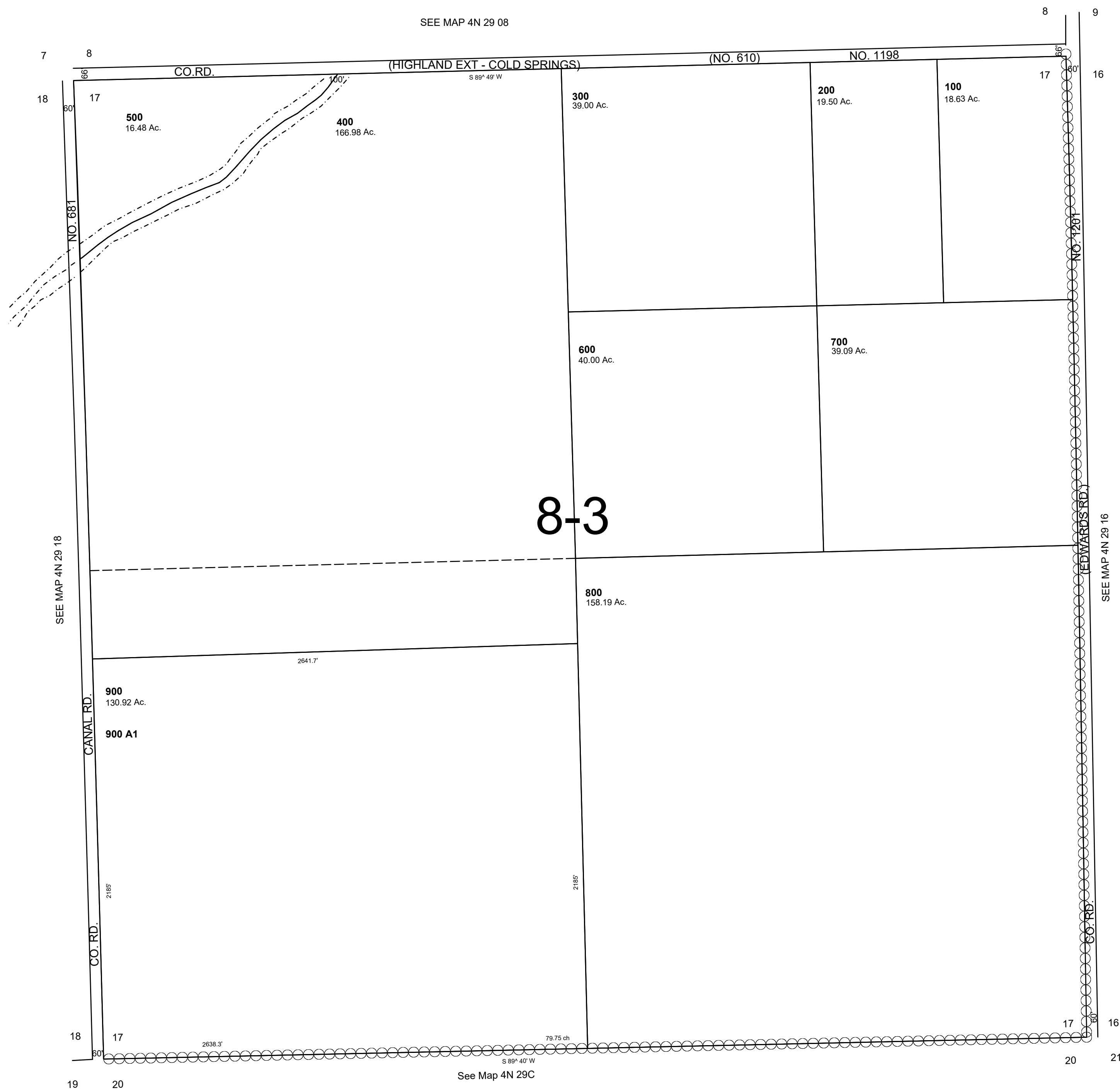


SEC 17 T4N R29E WM UMATILLA COUNTY

SCALE: 1" = 400'

4N 29 17

AERIAL PHOTO NO. NZ2P 18-20 & 1P 124-126



REVISED: 10-17-18

4N 29 17