

This map was prepared for Assessment & Taxation purposes only and was NOT prepared nor is it suitable for legal, engineering or surveying purposes.

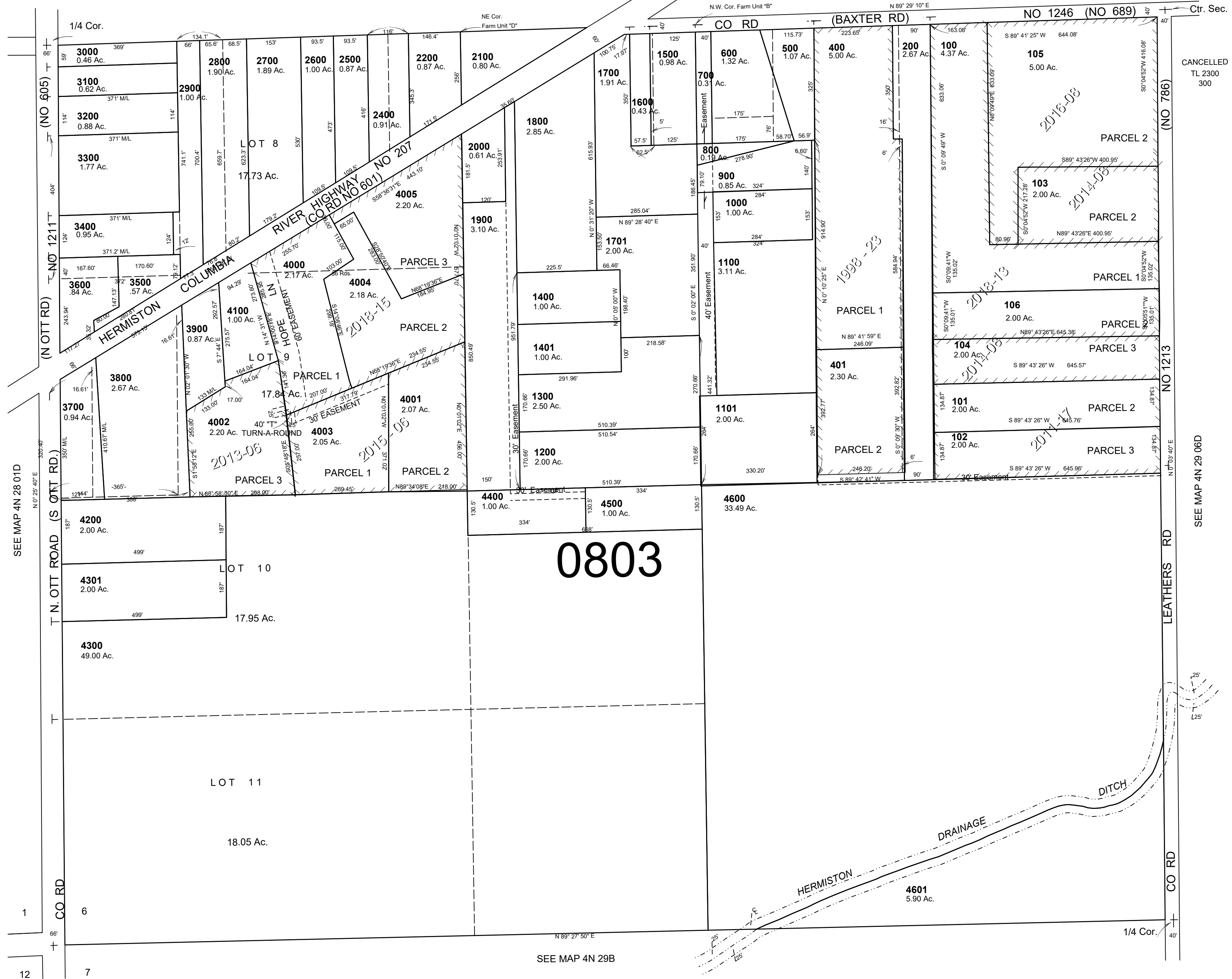
SW 1/4 SEC 6 T4N R29E WM UMATILLA COUNTY

SCALE 1"=200'

4N 29 06C

AERIAL PHOTO NO, 1P 124 & 125

SEE MAP 4N 29 06B



SEE MAP 4N 28 01D

1
6
12
7

SEE MAP 4N 29B

SEE MAP 4N 29 06D

Revised: 11-14-18

4N 29 06C