

This map was prepared for Assessment & Taxation purposes only and was NOT prepared nor is it suitable for legal, engineering or surveying purposes.

Cancelled Tax Lots  
502

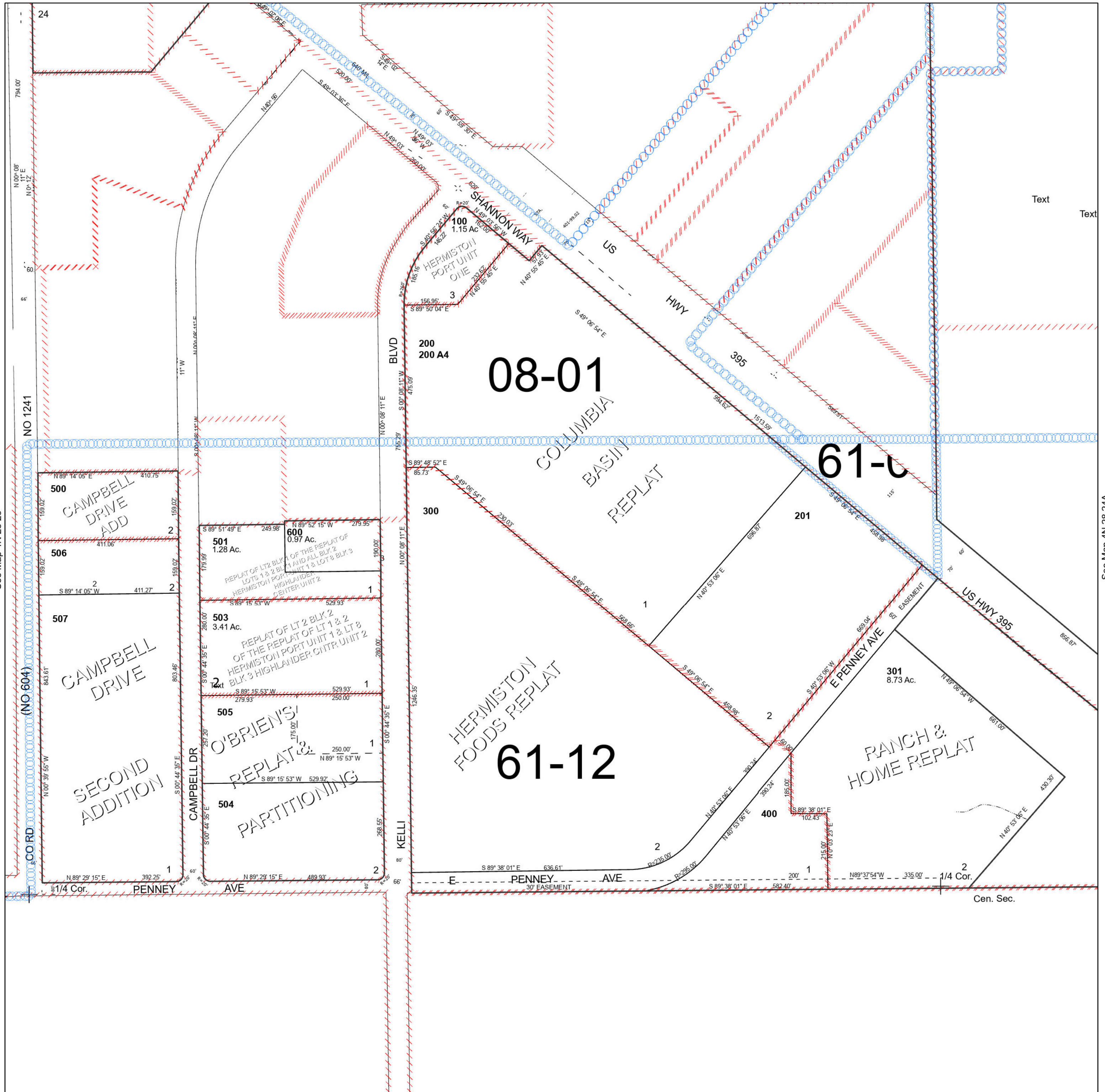
# NW 1/4 SEC 24 T4N R28E WM UMATILLA COUNTY

# 4N 28 24B

Hermiston

SCALE 1" = 200'

See Map 4N 28 24BA



See Map 4N 28 23

See Map 4N 28 24A