

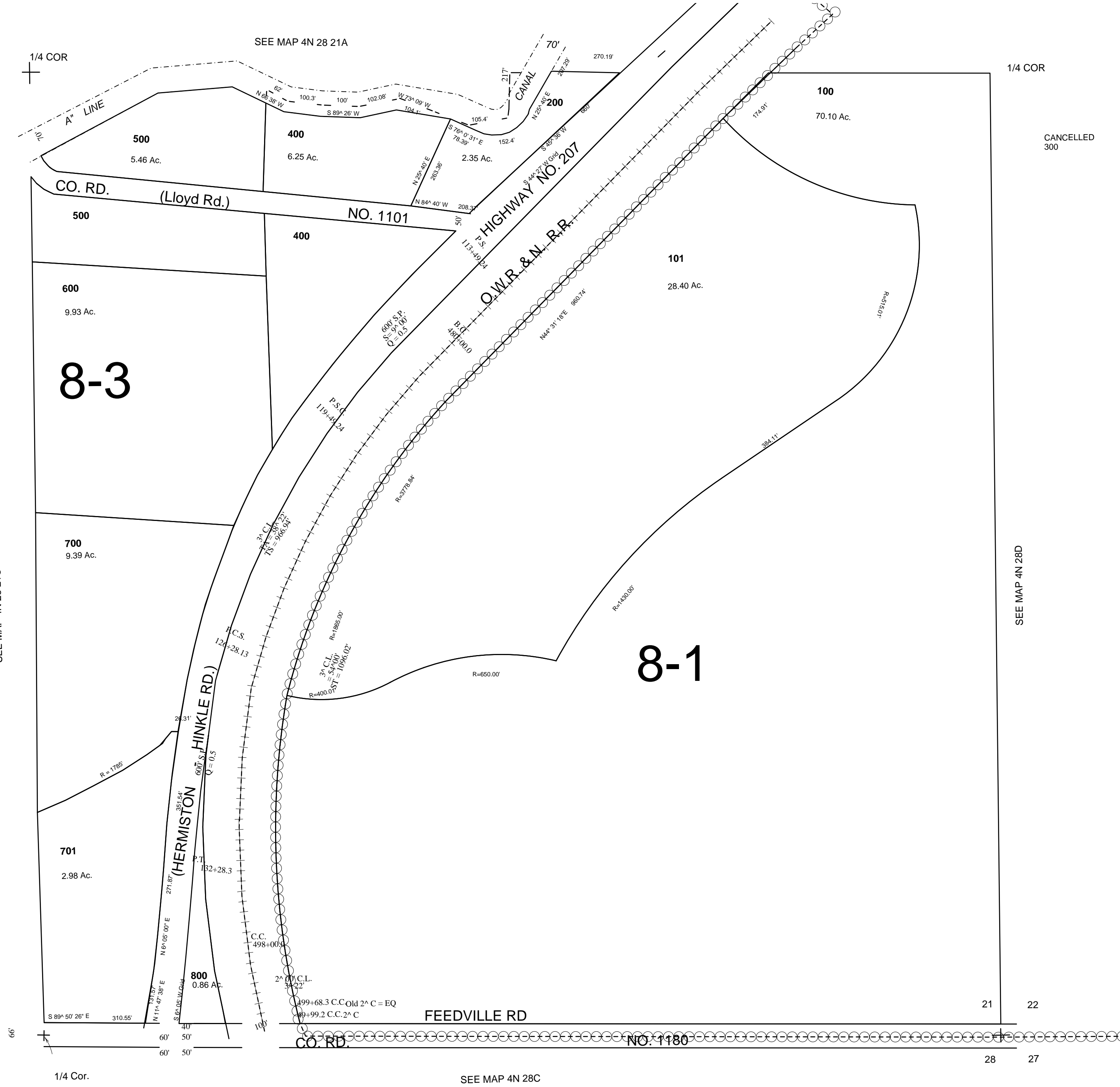
This map was prepared for Assessment & Taxation purposes only and was NOT prepared nor is it suitable for legal, engineering or surveying purposes.

SE 1/4 SEC 21 T4N R28E WM
UMATILLA COUNTY
SCALE 1"=200'

4/29/05

4N2821D

Aerial Photo No. NZ-2P-124



CANCELLED
300

SEE MAP 4N 28D

SEE MAP 4N 28 21C

21

22

SEE MAP 4N 28C

28

27

4N2821D