

This map was prepared for Assessment & Taxation purposes only and was NOT prepared nor is it suitable for legal, engineering or surveying purposes.

# NE1/4 SEC 18 T4N R28E WM UMATILLA COUNTY

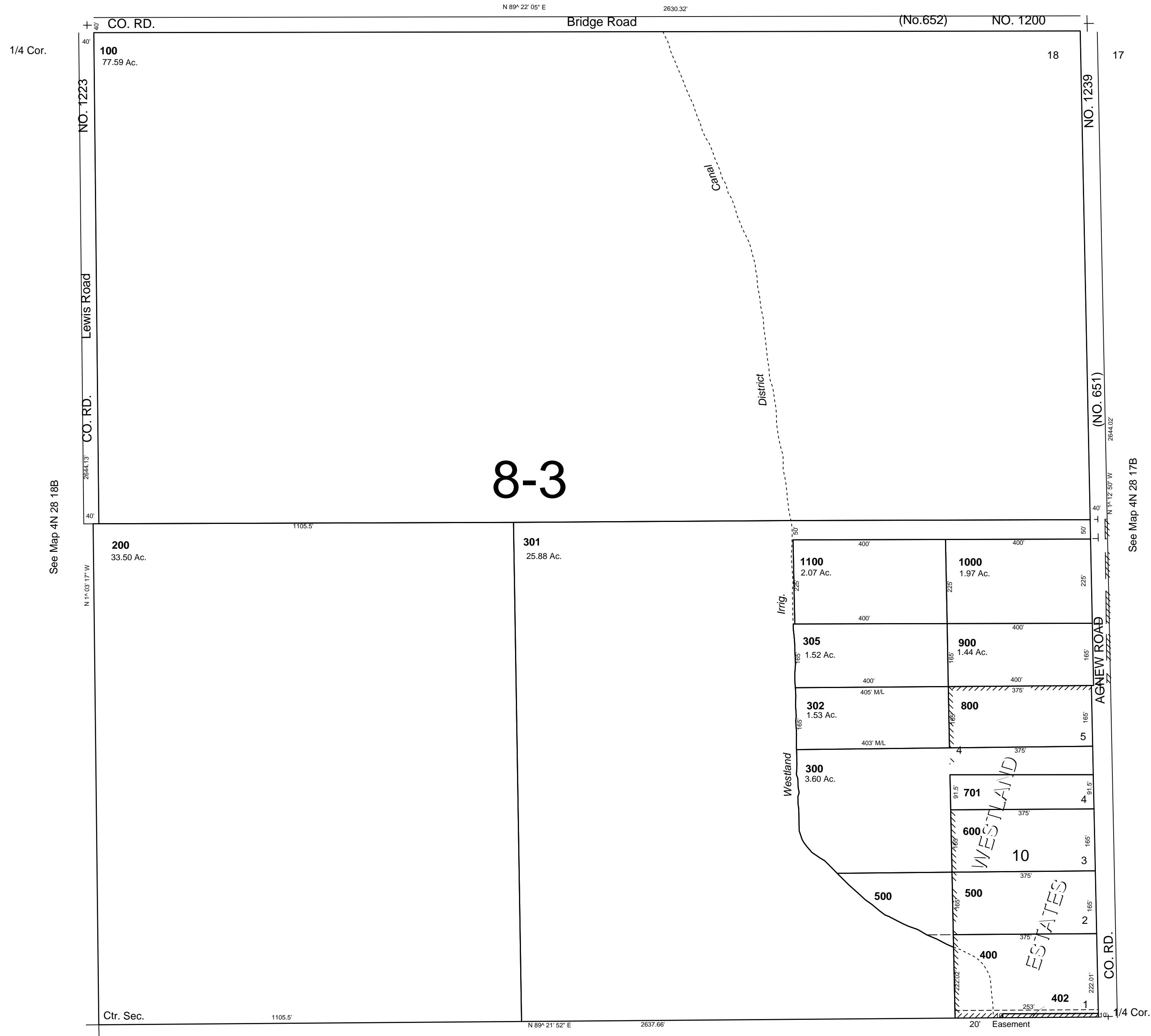
11/15/07

**4N 28 18A**  
AERIAL PHOTO NO. 2P-26

SCALE 1"=200'

See Map 4N 28B

7 8



**4N 28 18A**