

This map was prepared for Assessment & Taxation purposes only and was NOT prepared nor is it suitable for legal, engineering or surveying purposes.

Cancelled Tax Lots  
301

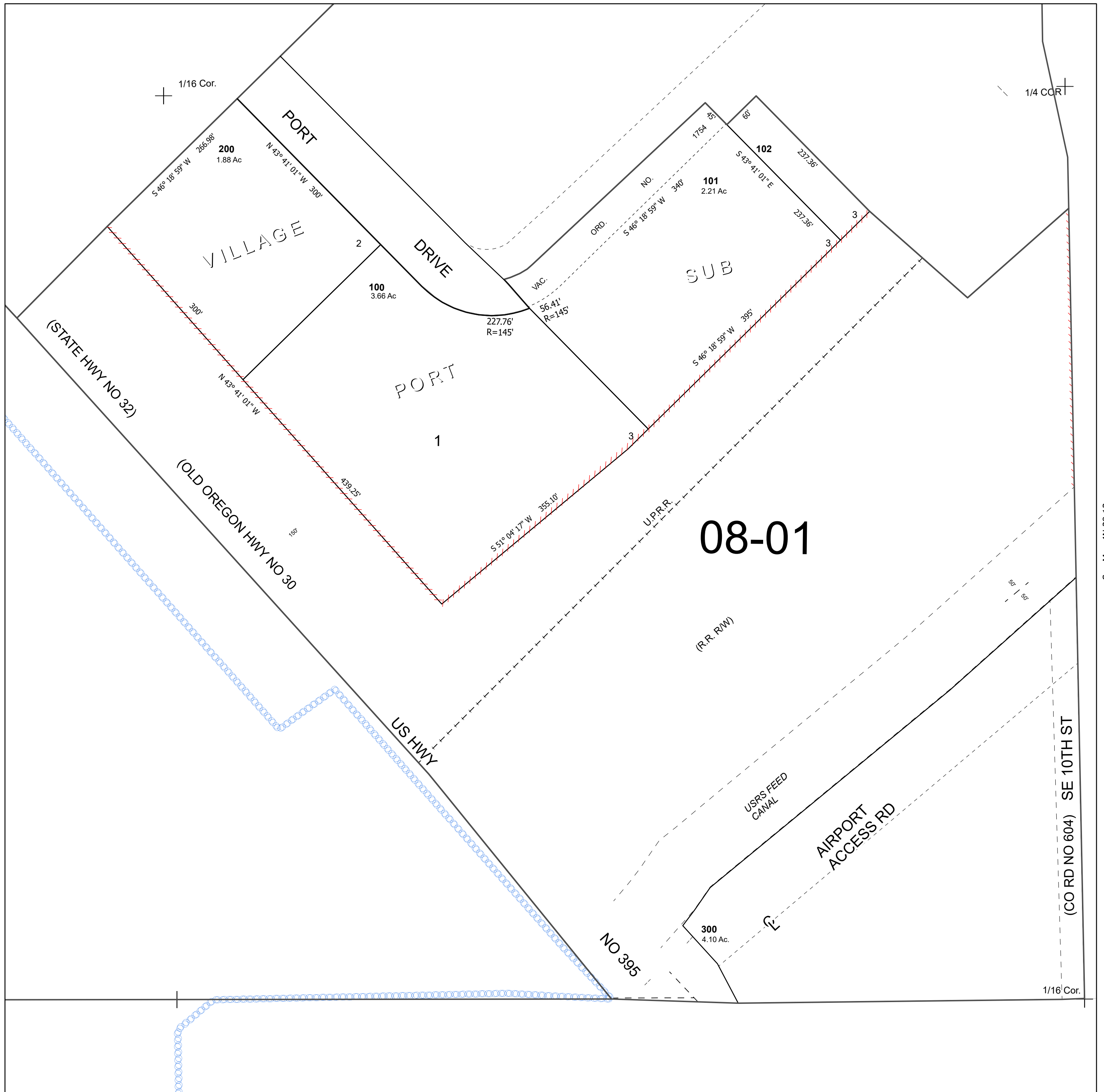
# NE 1/4 SE 1/4 SEC 14 T4N R28E WM UMATILLA COUNTY

Hermiston

SCALE 1" = 100'

## 4N 28 14DA

See Map 4N 28 14AD



See Map 4N 28 14DB

See Map 4N 28 13

Revised 5/16/2025

See Map 4N 28 14D

## 4N 28 14DA