

This map was prepared for Assessment & Taxation purposes only and was NOT prepared nor is it suitable for legal, engineering or surveying purposes.

SW 1/4 SEC 12 T4N R28E WM UMATILLA COUNTY

4N 28 12C

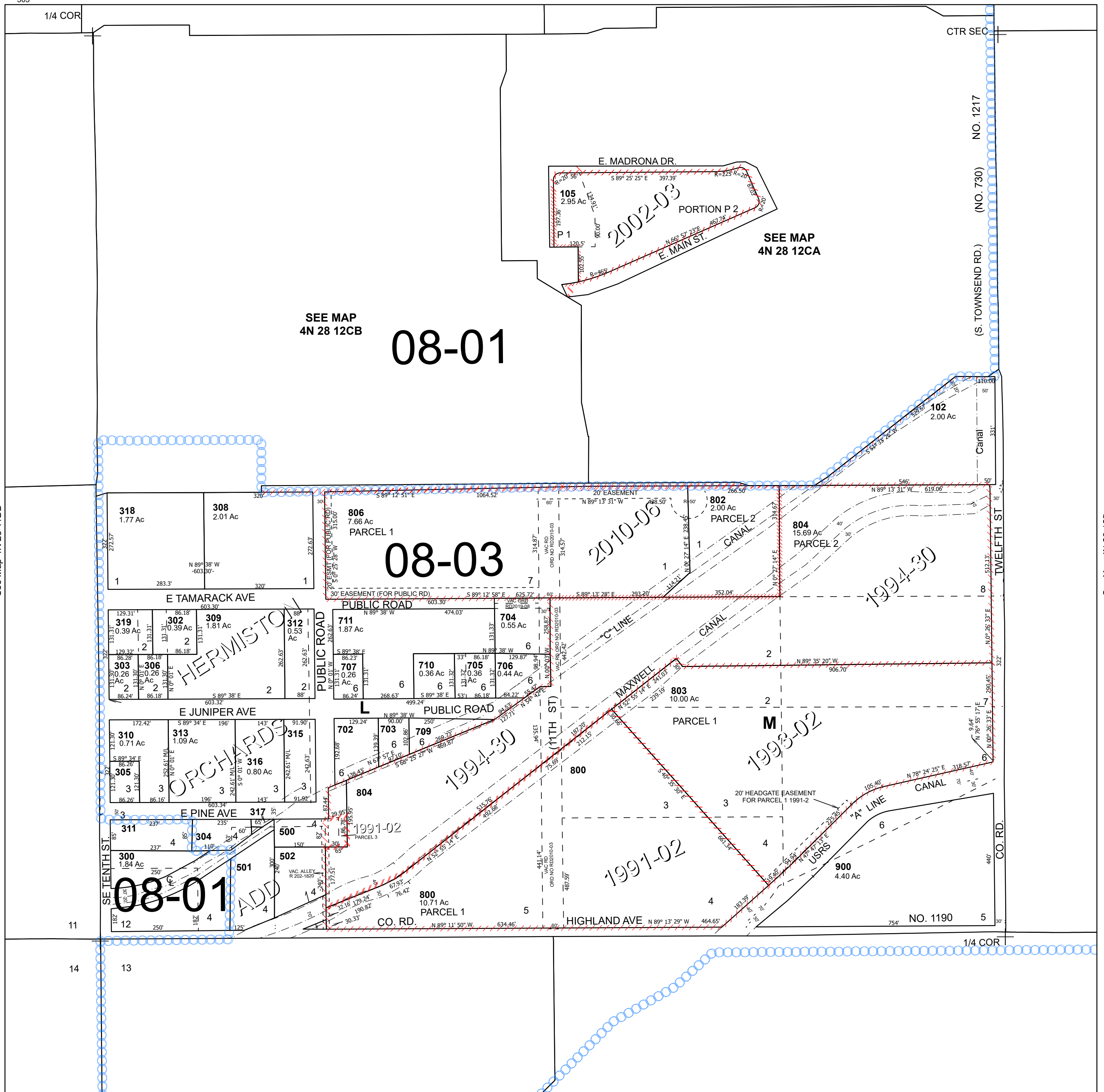
Hermiston

SCALE 1" = 200'

Cancelled Tax Lots

- 100 600
- 101 700
- 103 701
- 104 708
- 200 801
- 301 805
- 307
- 314
- 400
- 503

See Map 4N 28 12CA



See Map 4N 28 11DD

See Map 4N 28 12D

4N 28 12C