

This map was prepared for Assessment & Taxation purposes only and was NOT prepared nor is it suitable for legal, engineering or surveying purposes.

SW 1/4 NE 1/4 SEC 32 T4N R29E WM

UMATILLA COUNTY

SCALE 1" = 100'

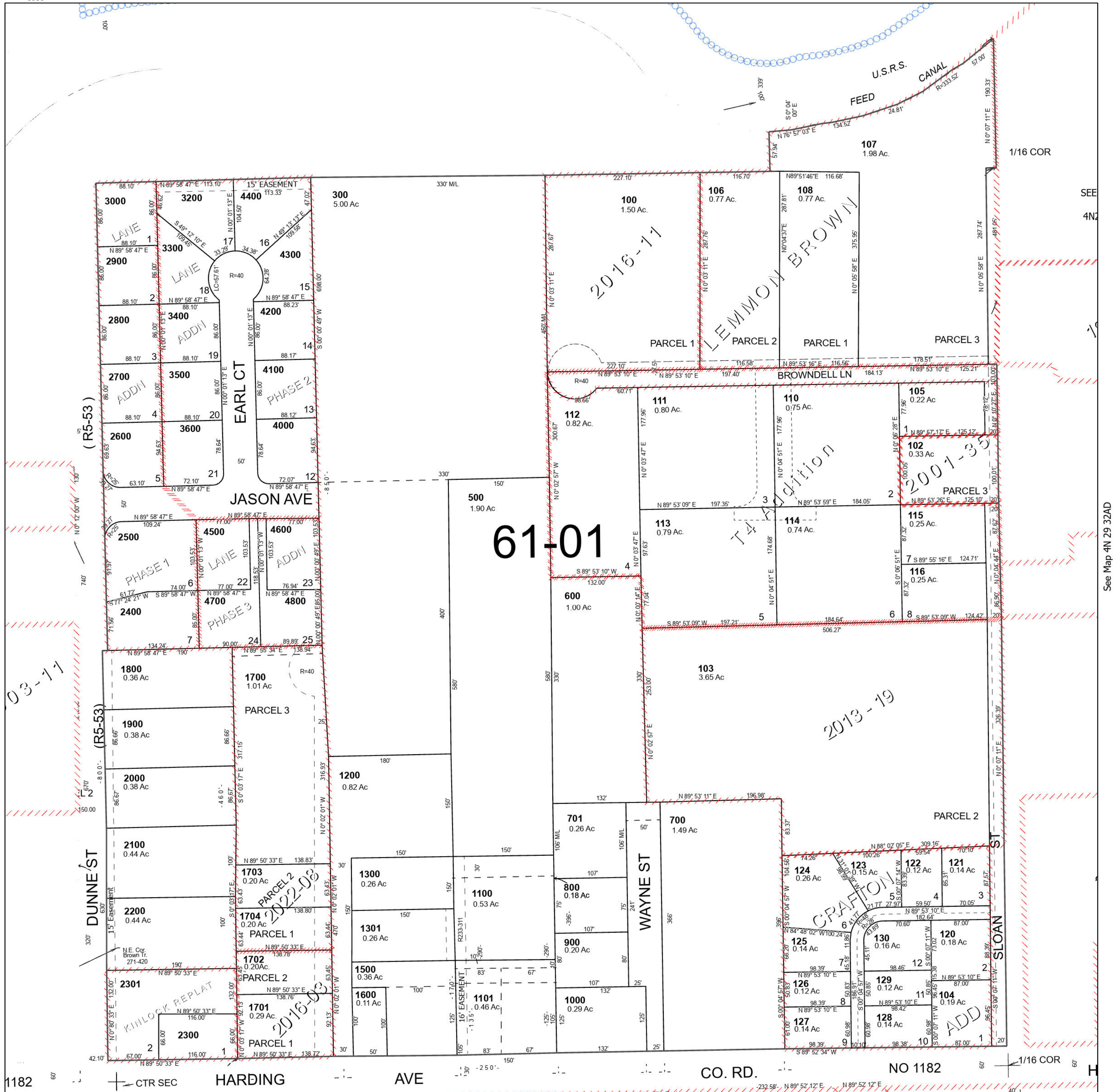
Stanfield

4N 29 32AC

Cancelled Tax Lots

- 101
- 200
- 400
- 702
- 1102
- 1400
- 3100
- 3700
- 3800
- 3900

See Map 4N 29 32



See Map 4N 29 32BD

See Map 4N 29 32AD

Revised 3/26/2024

See Map 4N 29 32DB

4N 29 32AC