

This map was prepared for Assessment & Taxation purposes only and was NOT prepared nor is it suitable for legal, engineering or surveying purposes.

NE 1/4 SEC 05 T4N R29E WM UMATILLA COUNTY

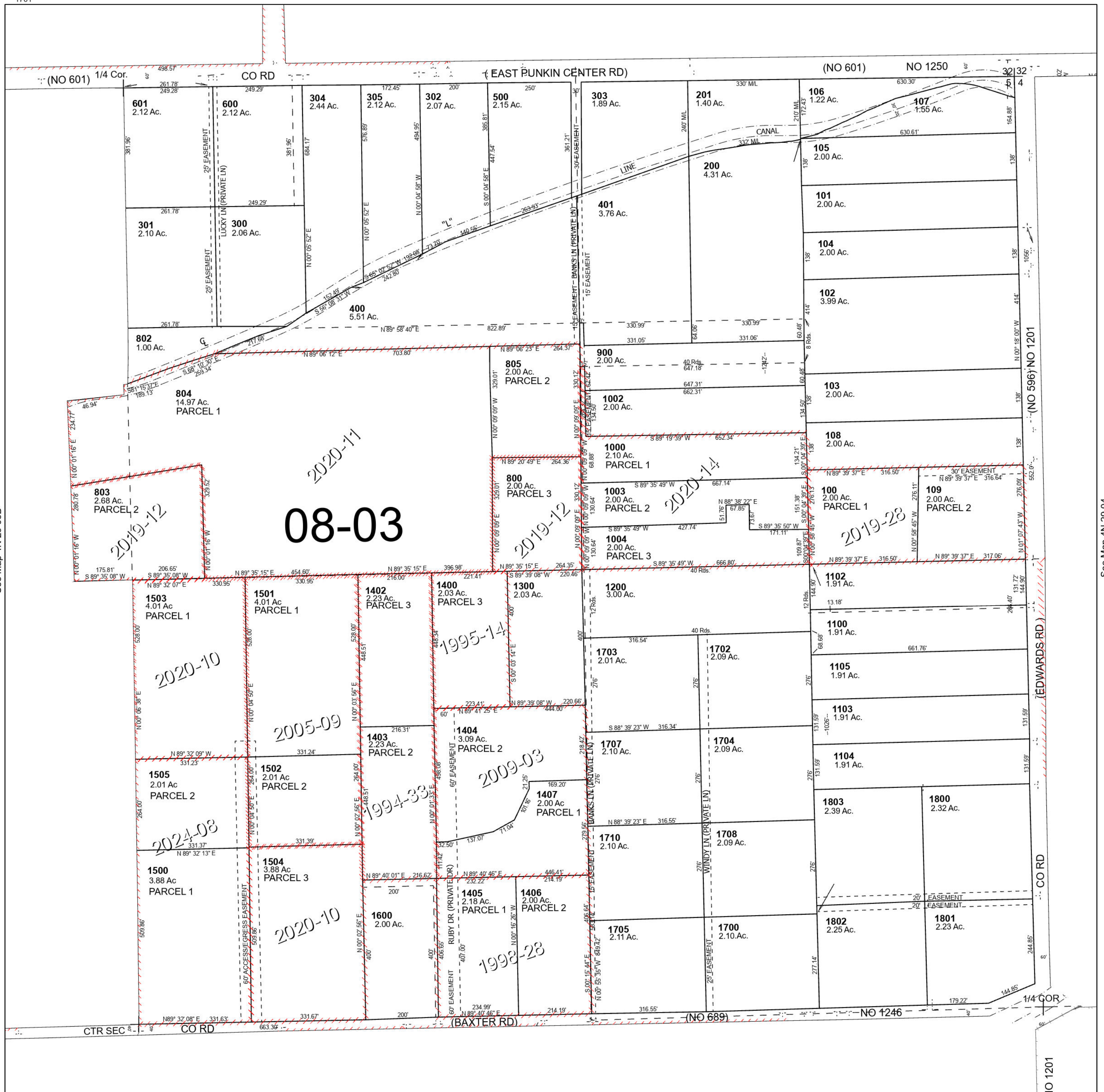
4N 29 05A

SCALE 1" = 200'

See Map 5N 29 32DC

Cancelled Tax Lots

- 306 1706
- 307 1709
- 700 1900
- 801
- 901
- 902
- 1001
- 1101
- 1401
- 1701



See Map 4N 29 05B

See Map 4N 29 04

4N 29 05A