

This map was prepared for Assessment & Taxation purposes only and was NOT prepared nor is it suitable for legal, engineering or surveying purposes.

Cancelled Tax Lots

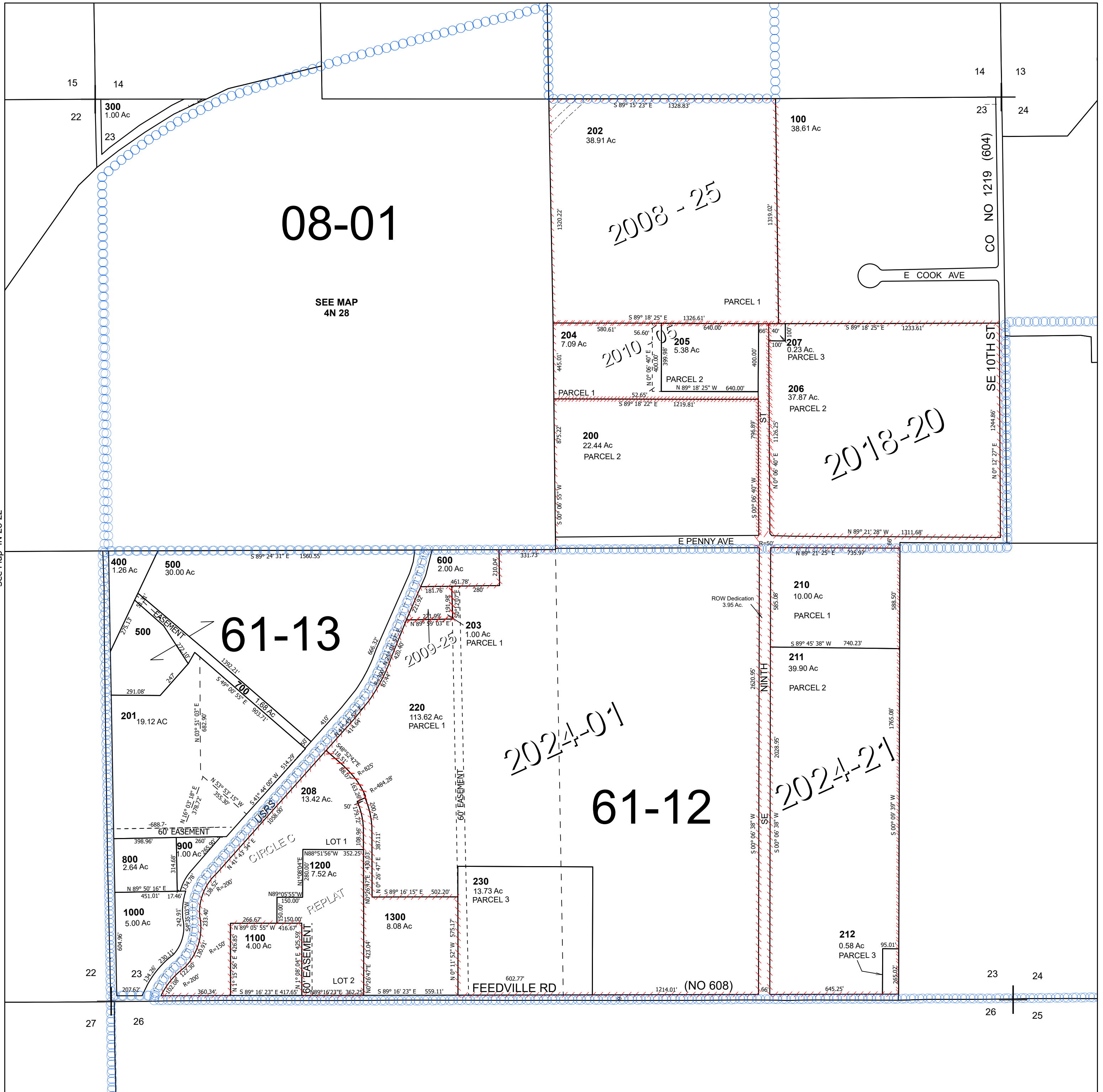
# SEC 23 T4N R28E WM UMATILLA COUNTY

# 4N 28 23

## Hermiston

### SCALE 1" =400'

See Map 4N 28 14D



See Map 4N 28 22

See Map 4N 28 24B

Revised 1/13/2025

See Map 4N 28

# 4N 28 23