

This map was prepared for Assessment & Taxation purposes only and was NOT prepared nor is it suitable for legal, engineering or surveying purposes.

Cancelled Tax Lots

- 104
- 1900
- 2201
- 2309
- 2310
- 2311

NE 1/4 SEC 21 T4N R28E WM

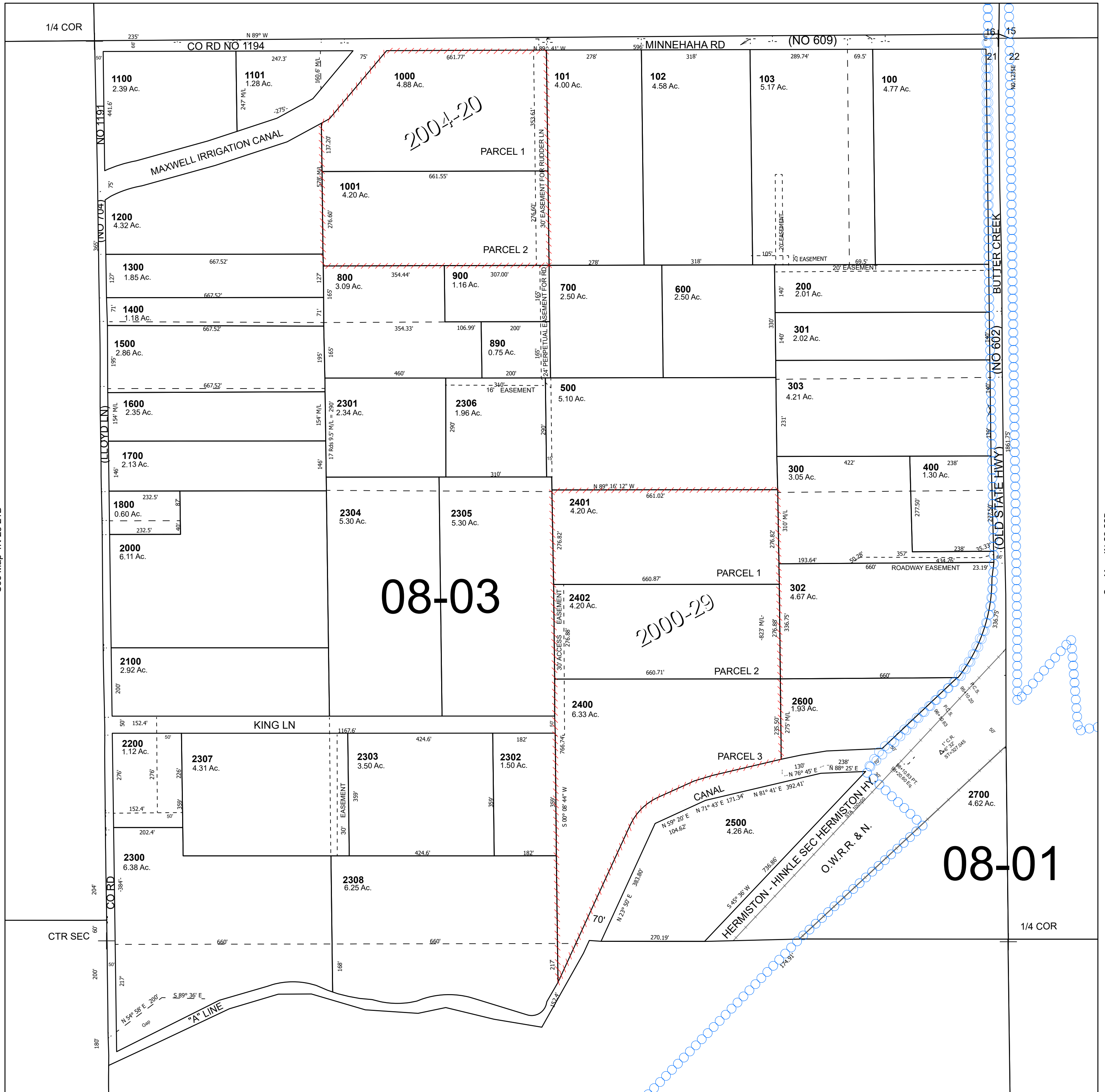
4N 28 21A

UMATILLA COUNTY

Hermiston

SCALE 1" = 200'

See Map 4N 28 16D



See Map 4N 28 21B

See Map 4N 28 22B