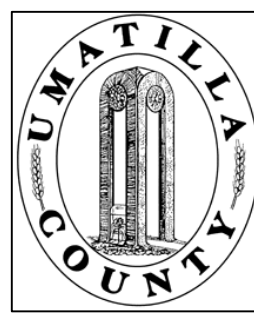


This map was prepared for Assessment & Taxation purposes only and was NOT prepared nor is it suitable for legal, engineering or surveying purposes.

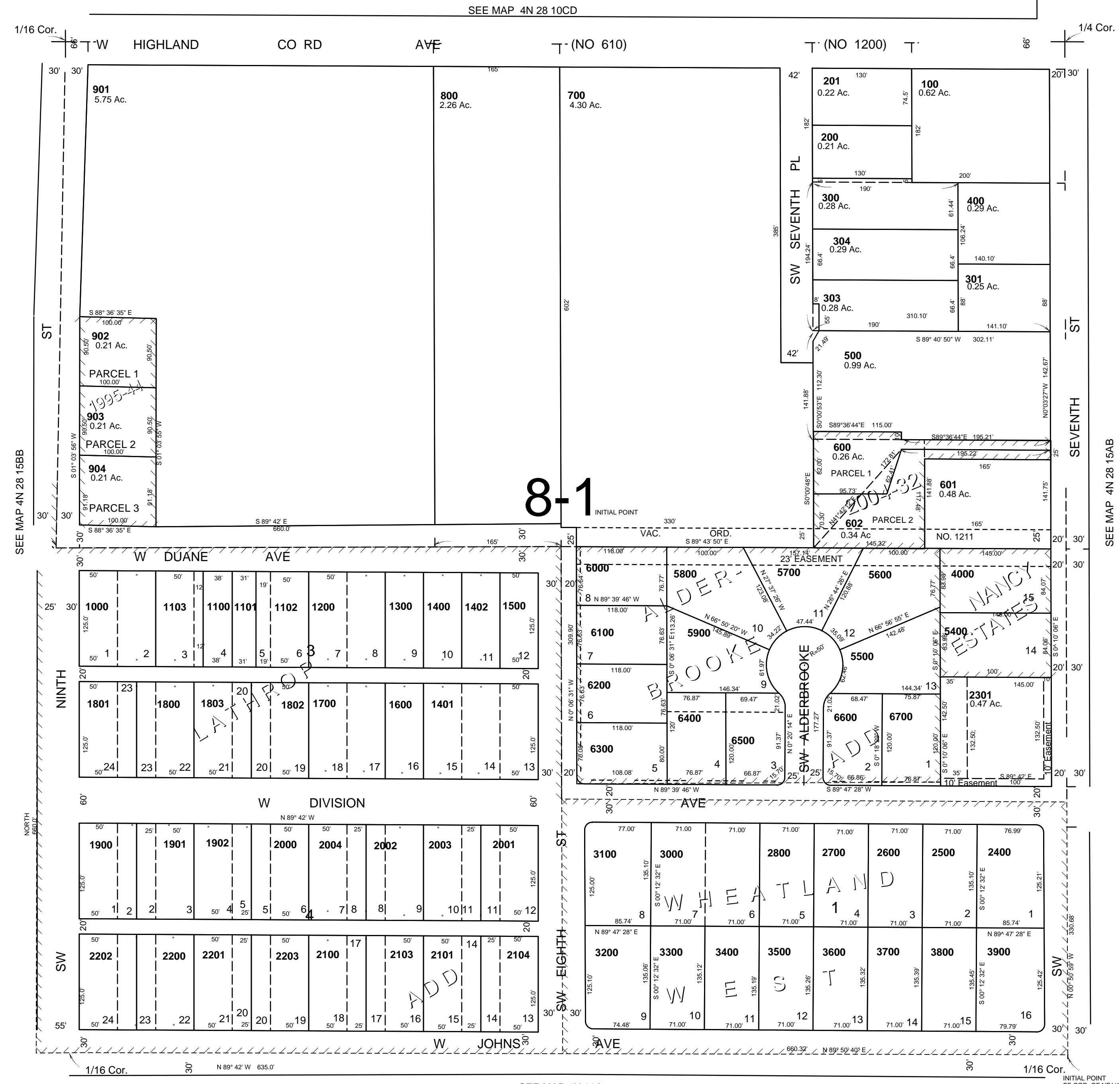


# NE1/4 NW1/4 SEC 15 T4N R28E WM UMATILLA COUNTY

## 4N 28 15BA

SCALE: 1" = 100'

AERIAL PHOTO NO. NZ-2P-23



- CANCELLED
- TL 900
- 701
- 101
- 302
- 501
- 2303
- 202
- 2300
- 2102
- 1903
- 401
- 305
- 2305
- 4100
- thru
- 5300
- 2900
- 502
- 2304
- 2302
- 503

8-1

Revised: 11/17/14  
**4N 28 15BA**