

This map was prepared for Assessment & Taxation purposes only and was NOT prepared nor is it suitable for legal, engineering or surveying purposes.

# NW 1/4 NE 1/4 SEC 15 T4N R28E WM

## UMATILLA COUNTY

SCALE 1" = 100'

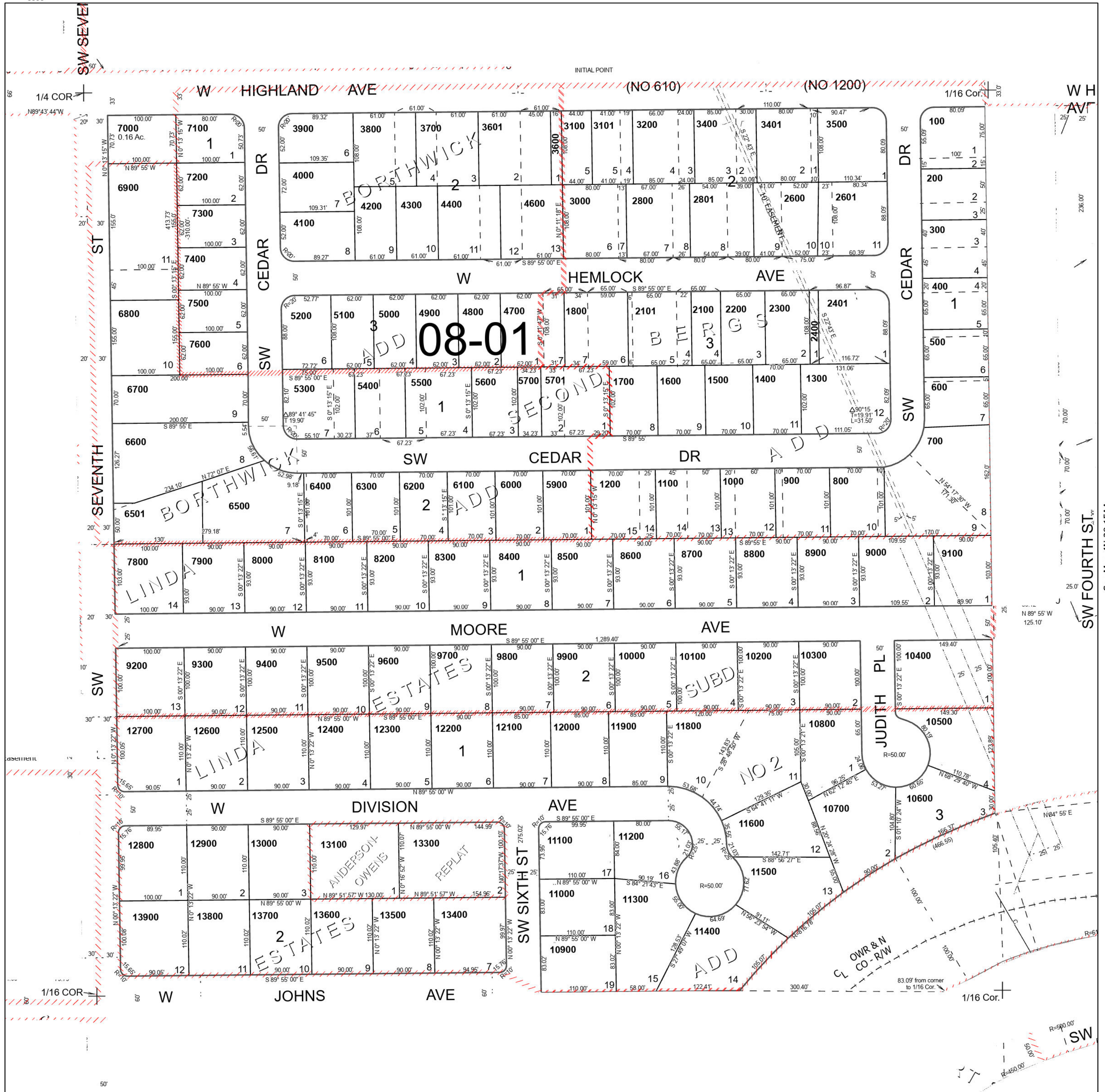
Hermiston

### 4N 28 15AB

Cancelled Tax Lots

1801	4500
1900	5800
1901	6801
2000	7700
2500	7702
2700	7703
2802	7707
2900	11700
2901	13200
3300	

See Map 4N 28 10DC



See Map 4N 28 15BA

See Map 4N 28 15AA

Revised 10/19/2023

See Map 4N 28 15AC

### 4N 28 15AB