

This map was prepared for Assessment & Taxation purposes only and was NOT prepared nor is it suitable for legal, engineering or surveying purposes.

# NE 1/4 NW 1/4 SEC 14 T4N R28E WM UMATILLA COUNTY SCALE 1" = 100'

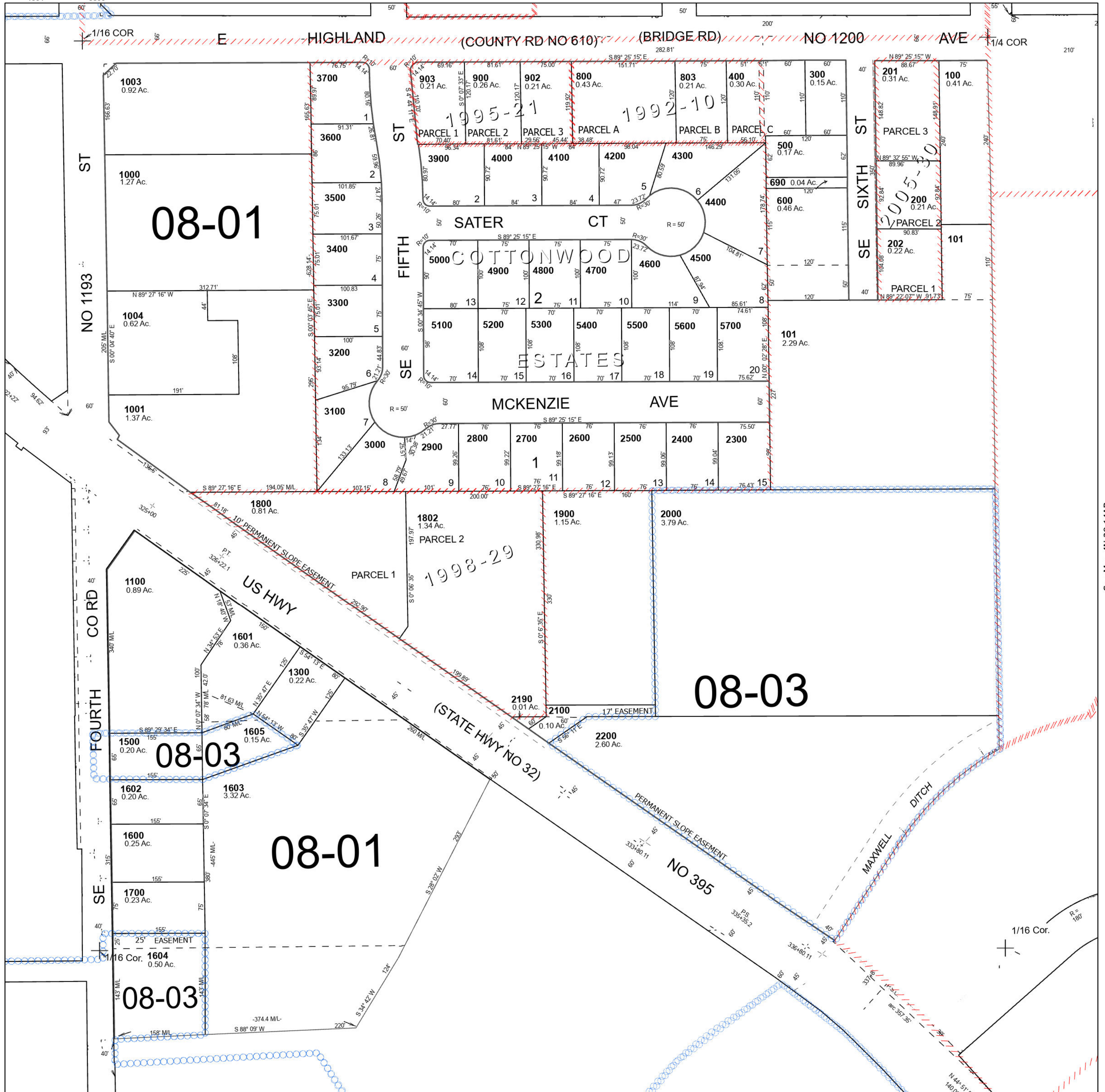
Hermiston

## 4N 28 14BA

Cancelled Tax Lots

700	1400
801	1606
802	1607
804	1801
901	2101
1002	2191
1101	2201
1102	2901
1200	3001
1301	3800

See Map 4N 28 11CD



See Map 4N 28 14BB

See Map 4N 28 14AB

Revised 10/25/2023

See Map 4N 28 14BD

## 4N 28 14BA