

This map was prepared for Assessment & Taxation purposes only and was NOT prepared nor is it suitable for legal, engineering or surveying purposes.

Cancelled Tax Lots  
500

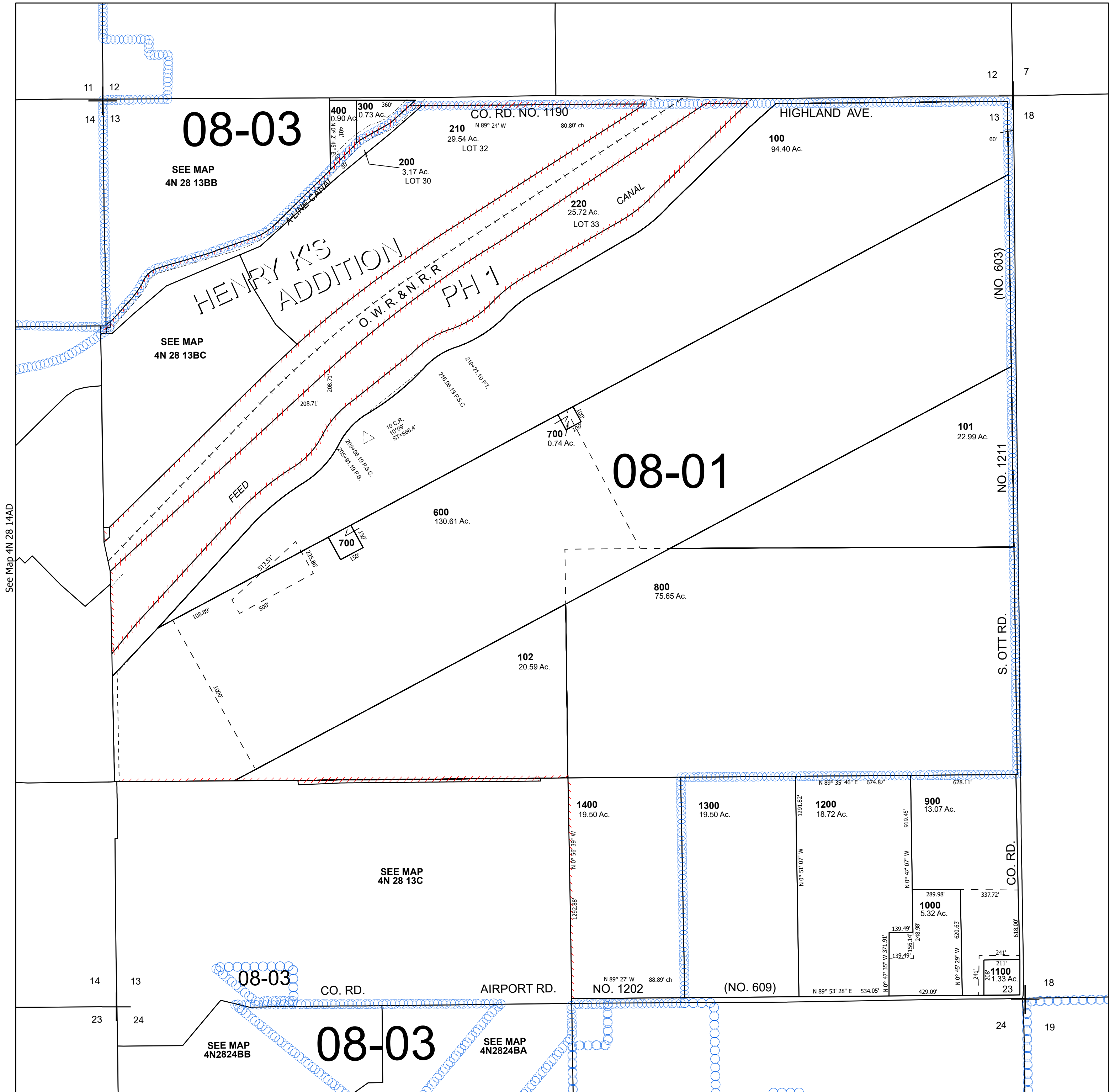
# SEC 13 T4N R28E WM UMATILLA COUNTY

## 4N 28 13

Hermiston

SCALE 1" = 400'

See Map 4N 28 12D



See Map 4N 28 14AD

See Map 4N 29 18

Revised 4/17/2025

See Map 4N 28 24A

## 4N 28 13