

This map was prepared for Assessment & Taxation purposes only and was NOT prepared nor is it suitable for legal, engineering or surveying purposes.

NE 1/4 SE 1/4 SEC 11 T4N R28E WM

UMATILLA COUNTY

SCALE 1" = 100'

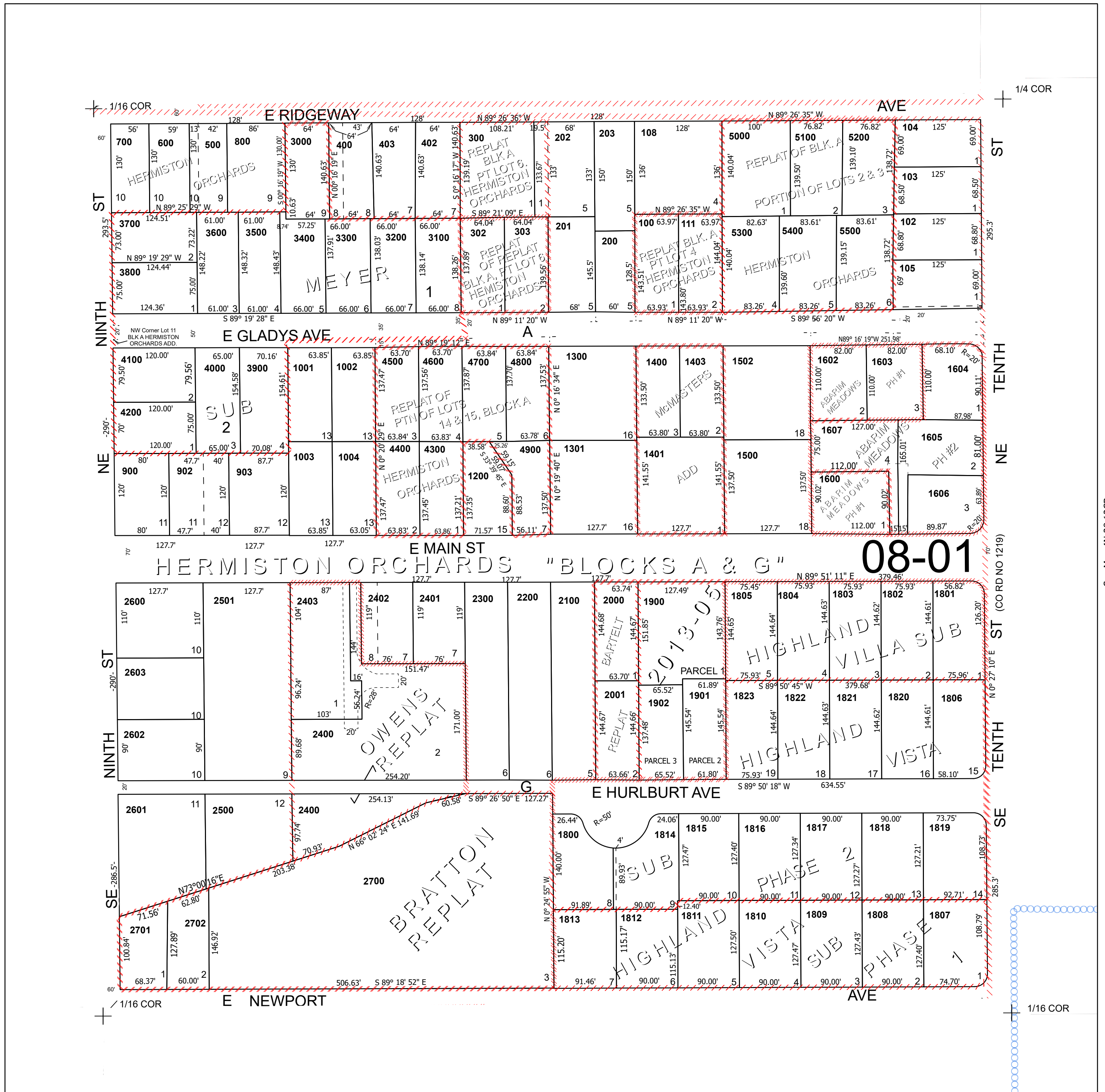
Hermiston

4N 28 11DA

Cancelled Tax Lots

101	801	1700
106	901	1890
107	1000	2800
109	1100	
110	1201	
204	1202	
205	1302	
301	1402	
401	1501	
404	1601	

See Map 4N 28 11AD



See Map 4N 28 11DB

See Map 4N 28 12CB