

This map was prepared for Assessment & Taxation purposes only and was NOT prepared nor is it suitable for legal, engineering or surveying purposes.

SW 1/4 SE 1/4 SEC 10 T4N R28E WM UMATILLA COUNTY

Hermiston

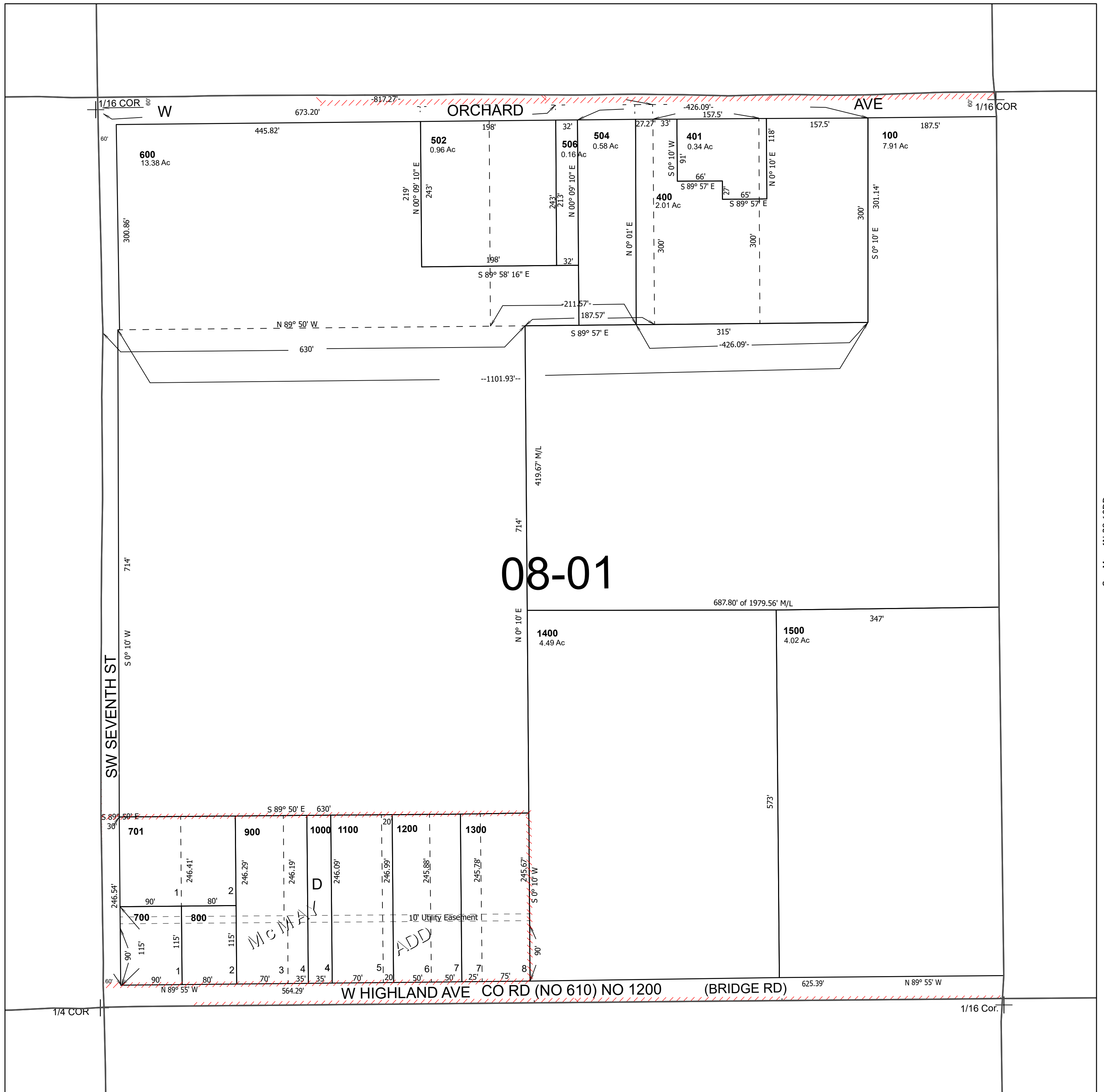
SCALE 1" = 100'

4N 28 10DC

Cancelled Tax Lots

- 200
- 300
- 500
- 501
- 503
- 505
- 801

See Map 4N 28 10DB



See Map 4N 28 10CD

See Map 4N 28 10DD

Revised 2/6/2025

See Map 4N 28 15AB

4N 28 10DC