

This map was prepared for Assessment & Taxation purposes only and was NOT prepared nor is it suitable for legal, engineering or surveying purposes.

Cancelled Tax Lots  
101  
102

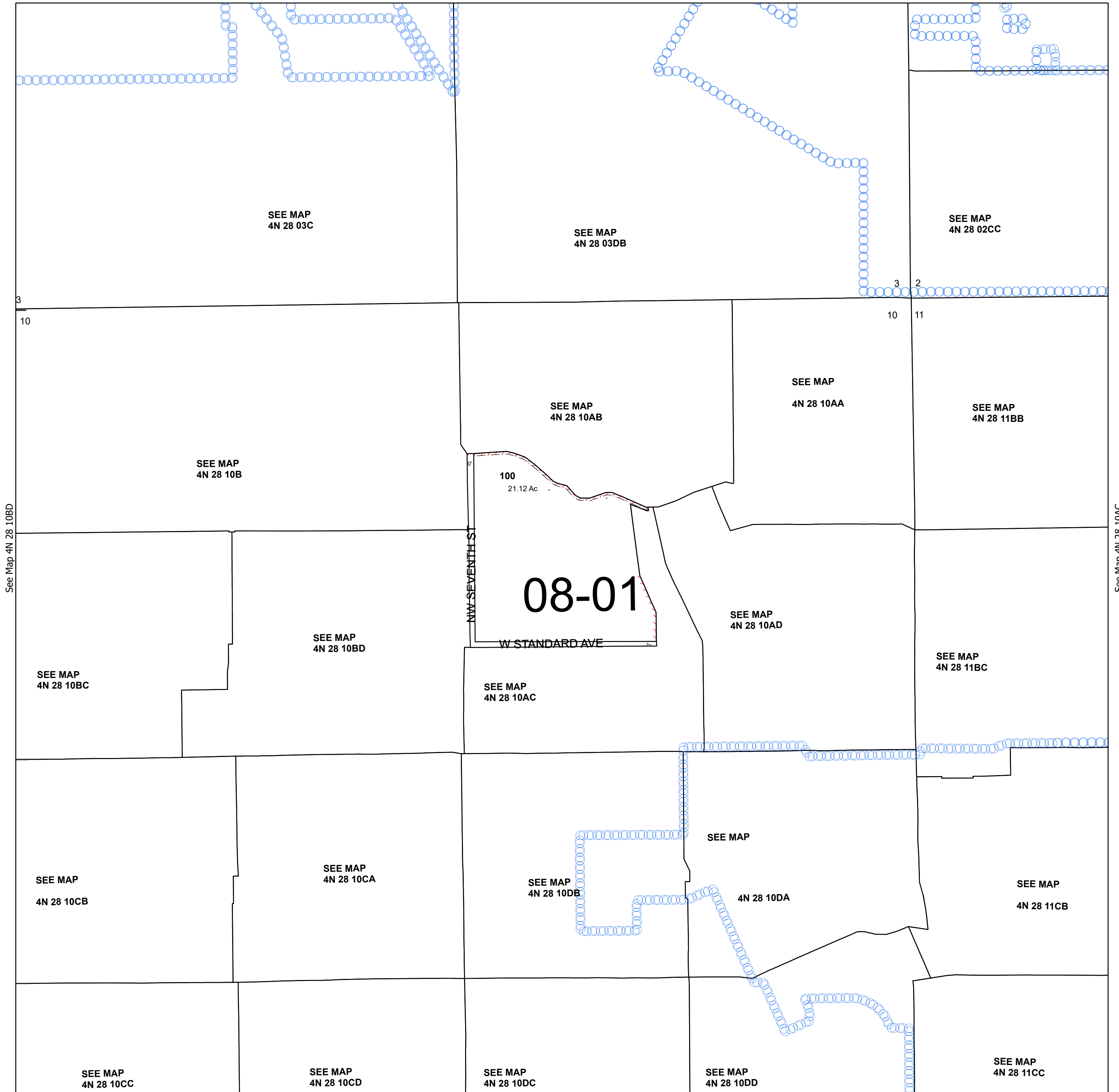
# SEC 10 T4N R28E WM UMATILLA COUNTY

## 4N 28 10

Hermiston

SCALE 1" =400'

See Map 4N 28 10AB



See Map 4N 28 10BD

See Map 4N 28 10AC

Revised 4/2/2025

See Map 4N 28 10AC

## 4N 28 10