

This map was prepared for Assessment & Taxation purposes only and was NOT prepared nor is it suitable for legal, engineering or surveying purposes.

SE 1/4 SEC 03 T4N R28E WM UMATILLA COUNTY

4N 28 03D

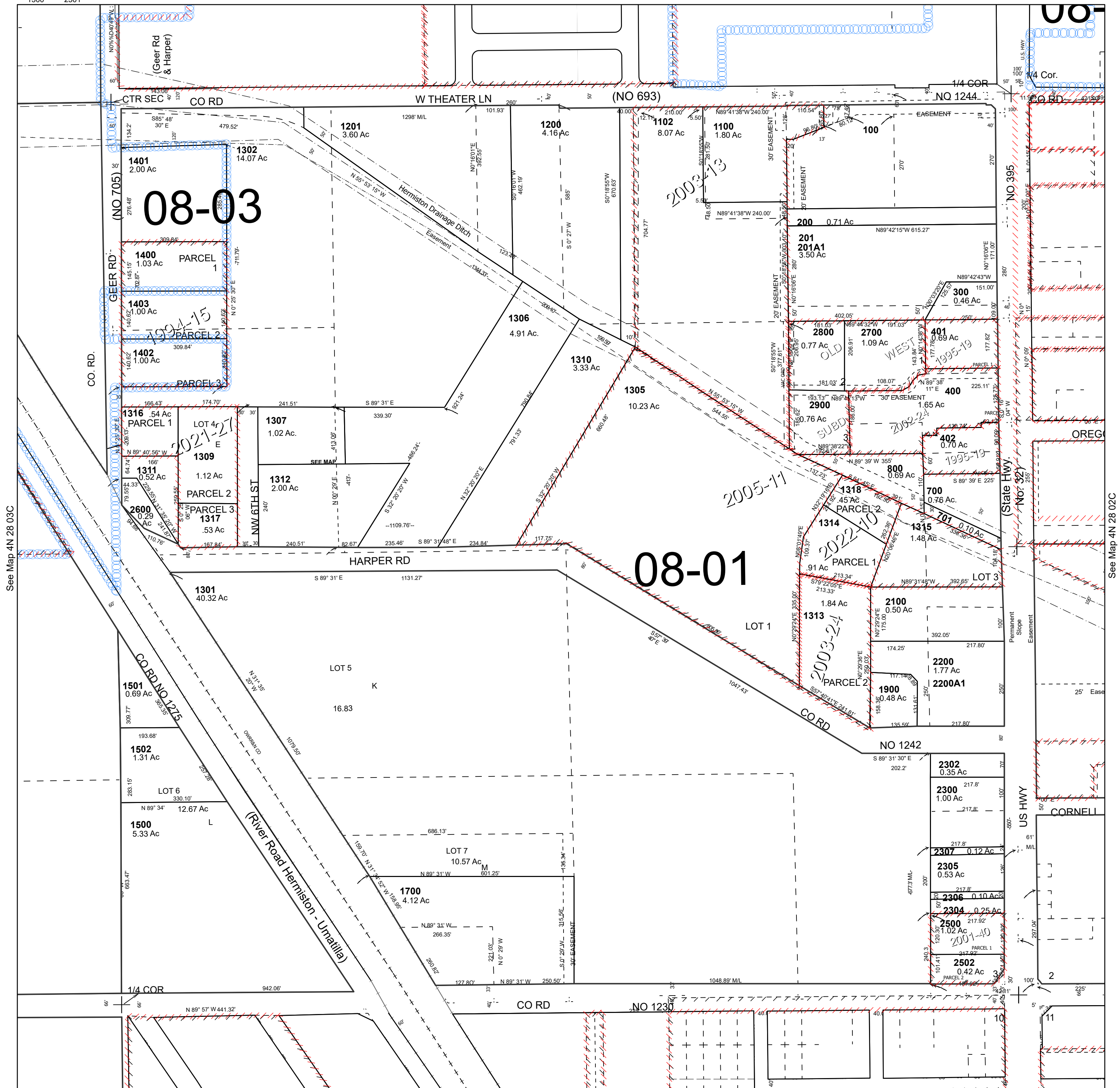
Hermiston

SCALE 1" = 200'

See Map 4N 28 03A

Cancelled Tax Lots

101	1303
102	1308
130	1600
404	1701
500	1800
600	2000
900	2301
1000	2303
1101	2400
1300	2501



Revised 12/29/2022

See Map 4N 28 10AB

4N 28 03D