

This map was prepared for Assessment & Taxation purposes only and was NOT prepared nor is it suitable for legal, engineering or surveying purposes.

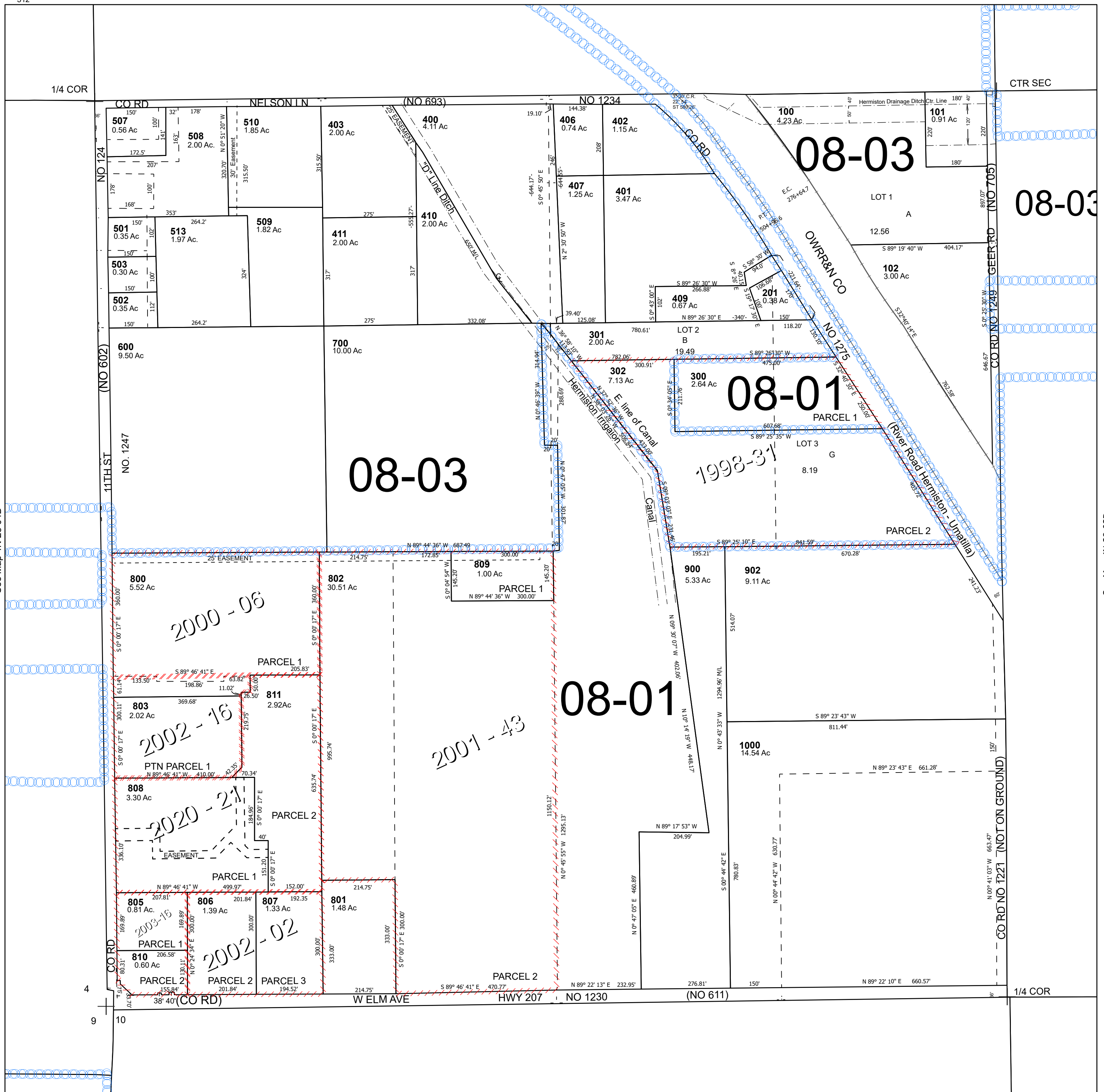
SW 1/4 SEC 03 T4N R28E WM UMATILLA COUNTY SCALE 1" = 200'

4N 28 03C Hermiston

Cancelled Tax Lots

- 200 514
- 404 804
- 405 901
- 408
- 500
- 504
- 505
- 506
- 511
- 512

See Map 4N 28 03B



Revised 12/18/2024

See Map 4N 28 10B

4N 28 03C