

This map was prepared for Assessment & Taxation purposes only and was NOT prepared nor is it suitable for legal, engineering or surveying purposes.

Cancelled Tax Lots  
100  
1800

# SW 1/4 NW 1/4 SEC 02 T4N R28E WM

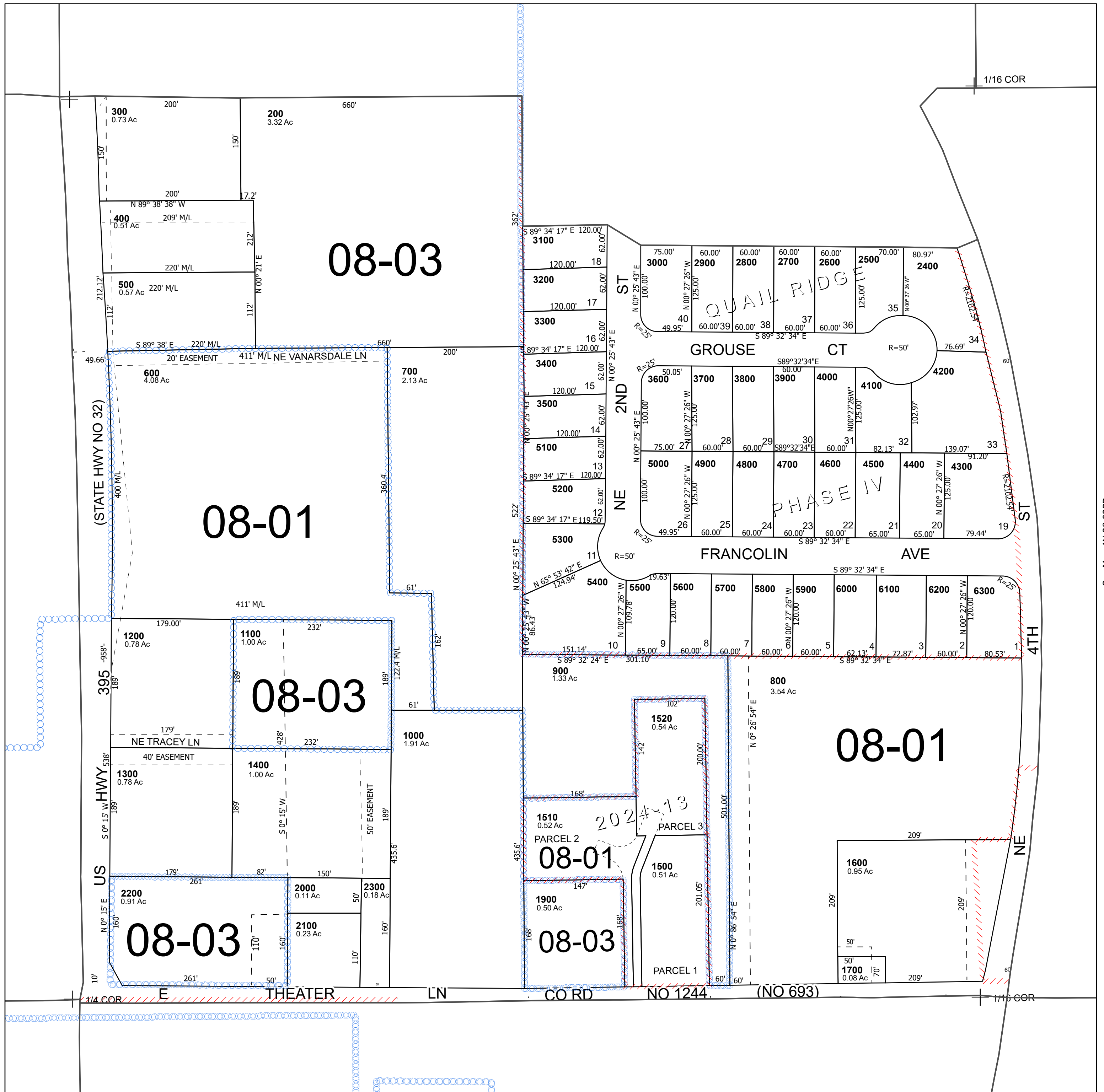
## UMATILLA COUNTY

SCALE 1" = 100'

Hermiston

### 4N 28 02BC

See Map 4N 28 02BB



See Map 4N 28 03A

See Map 4N 28 02BD