

This map was prepared for Assessment & Taxation purposes only and was NOT prepared nor is it suitable for legal, engineering or surveying purposes.

Cancelled Tax Lots

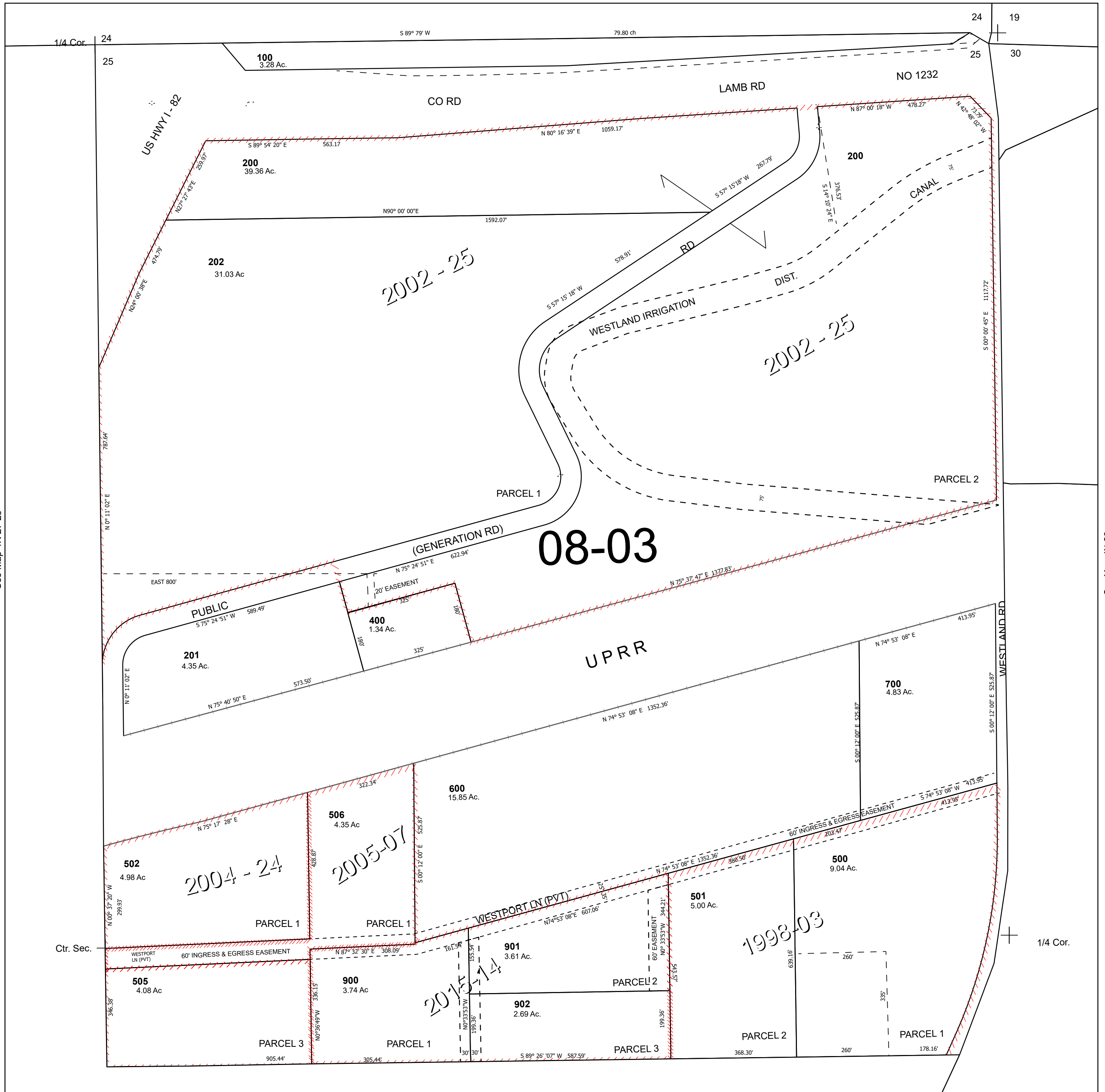
- 300
- 503
- 504
- 500A1
- 800

NE 1/4 SEC 25 T4N R27E WM UMATILLA COUNTY

4N 27 25A

SCALE 1" = 200'

See Map 4N 27



See Map 4N 27 25

See Map 4N 28

4N 27 25A