

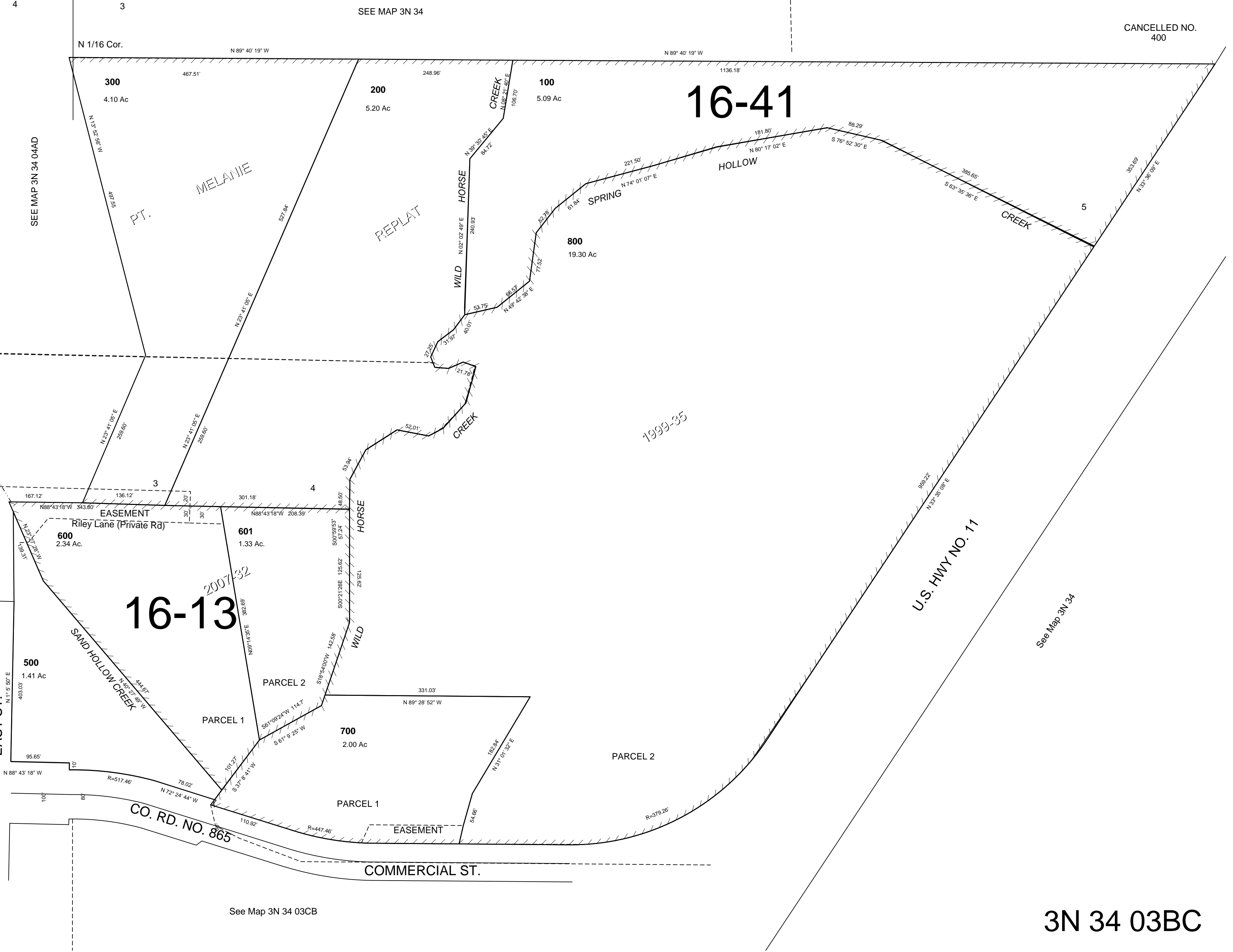
This map was prepared for Assessment & Taxation purposes only and was NOT prepared nor is it suitable for legal, engineering or surveying purposes.

SW1/4 NW1/4 SEC 3 T3N R34E WM
UMATILLA COUNTY
SCALE 1"=100'

3N 34 03BC

Revised: 1/14/08

CANCELLED NO. 400



See Map 3N 34 03CB

See Map 3N 34

3N 34 03BC