

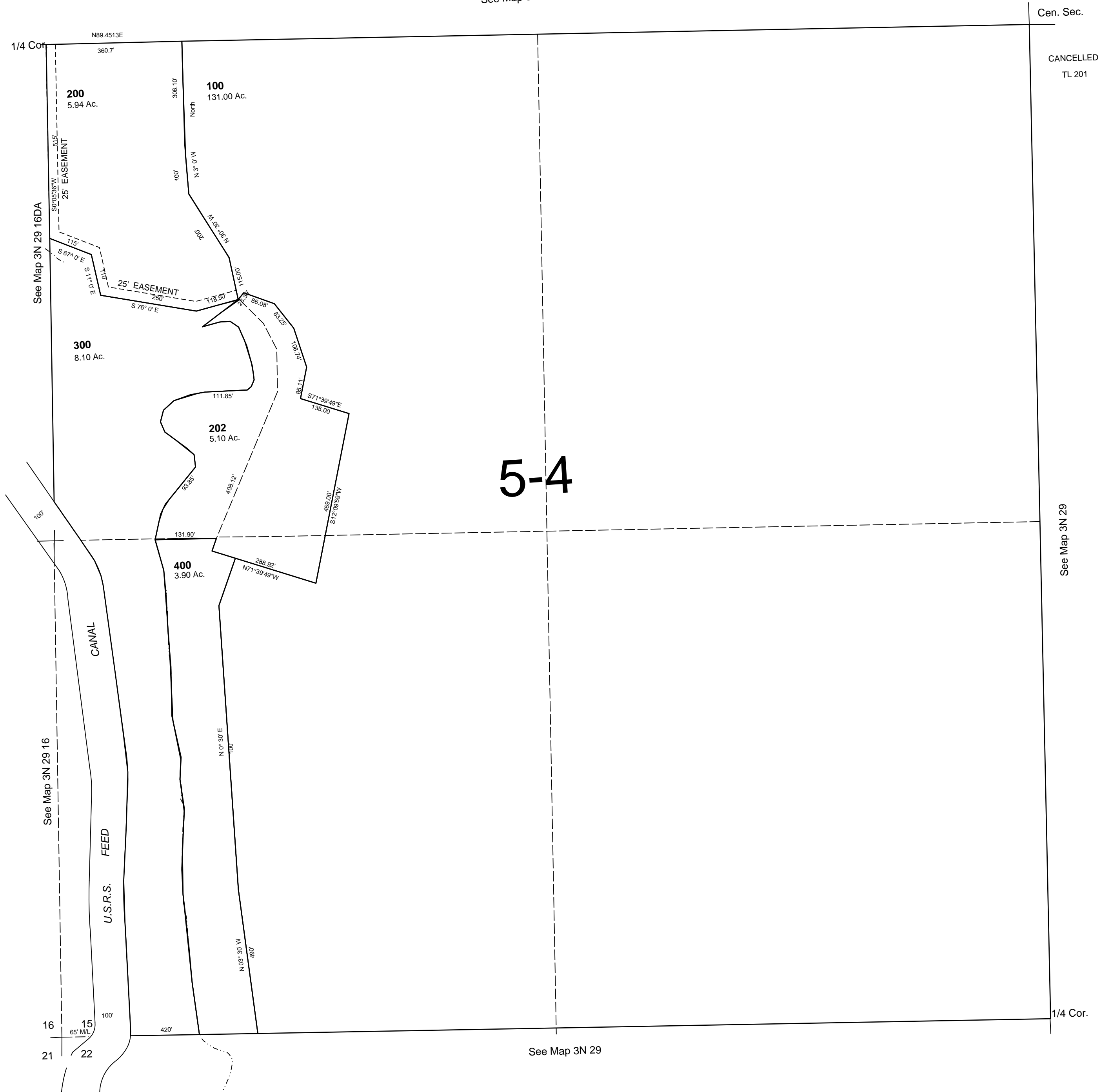
This map was prepared for Assessment & Taxation purposes only and was NOT prepared nor is it suitable for legal, engineering or surveying purposes.

SW1/4 SEC 15 T3N R29E WM UMATILLA COUNTY

SCALE 1"=200'

3N 29 15C
AERIAL PHOTO NO. 2P-112

See Map 3N 29



Revised: 4-29-09

3N 29 15C