

This map was prepared for Assessment & Taxation purposes only and was NOT prepared nor is it suitable for legal, engineering or surveying purposes.

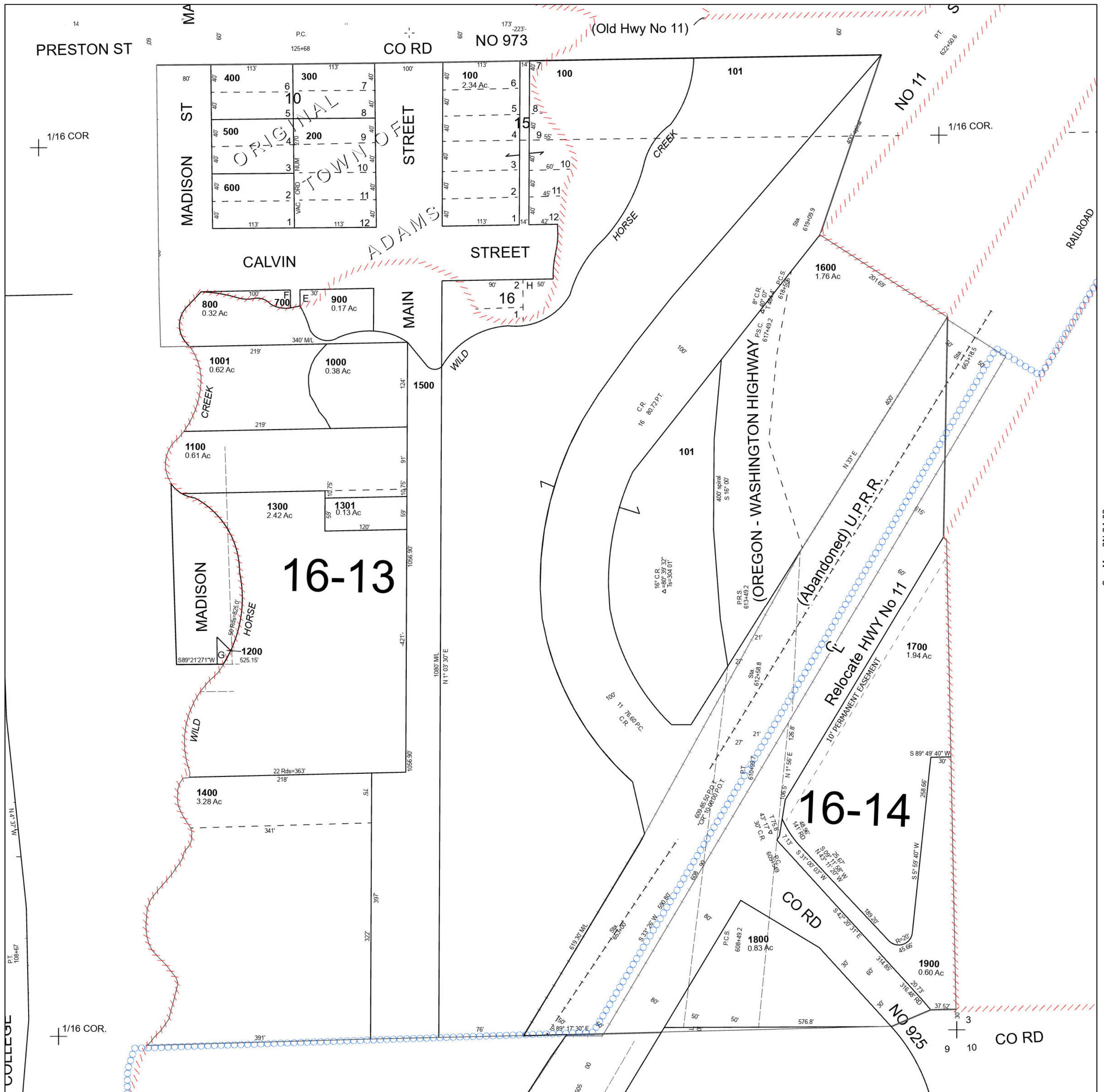
Cancelled Tax Lots
102
1701

SE 1/4 SE 1/4 SEC 04 T3N R34E WM UMATILLA COUNTY

SCALE 1" = 100'

Adams

3N 34 04DD



See Map 3N 34 04DC

See Map 3N 34 03

3N 34 04DD