

This map was prepared for Assessment & Taxation purposes only and was NOT prepared nor is it suitable for legal, engineering or surveying purposes.

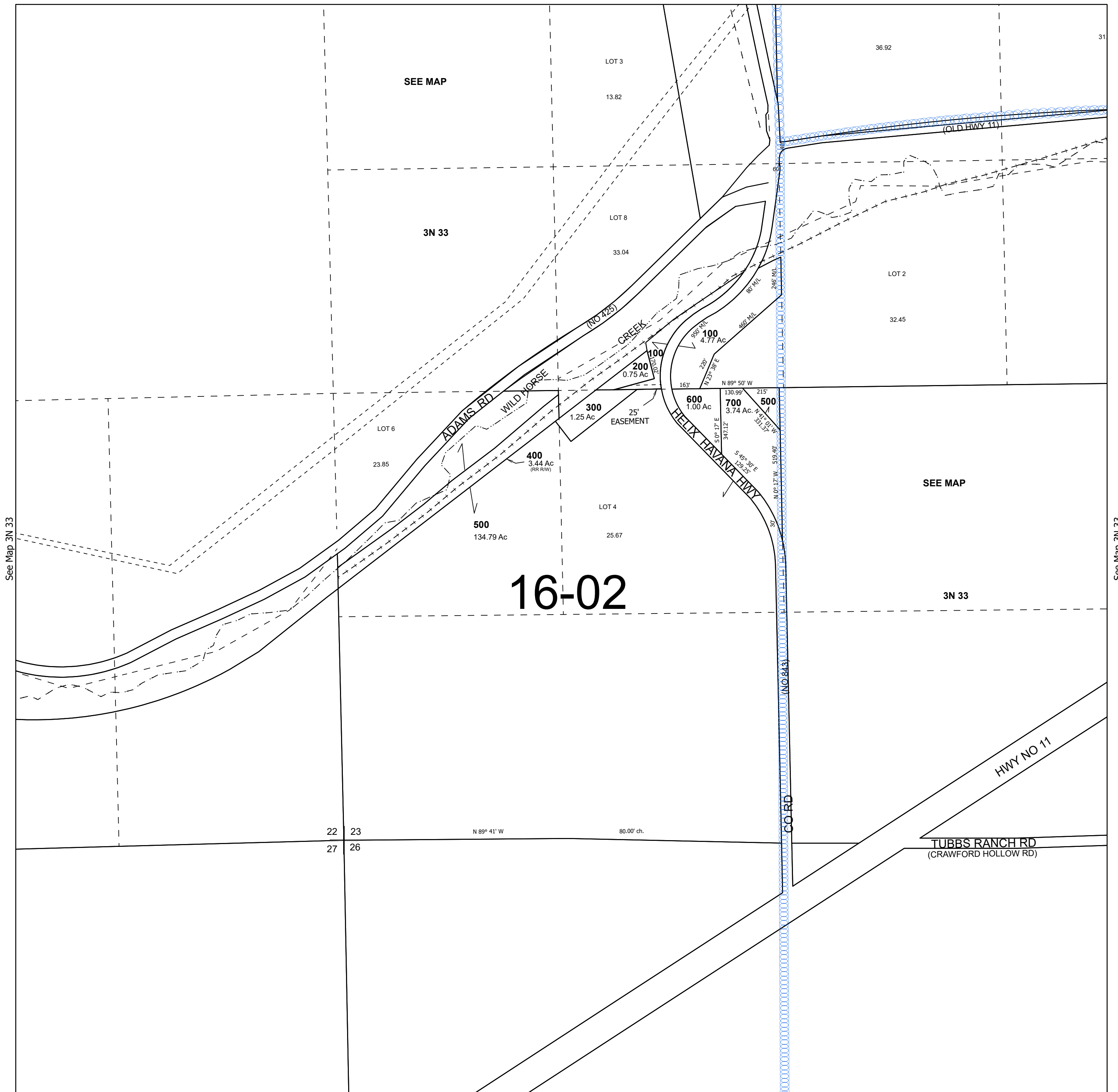
Cancelled Tax Lots

# SEC 23 T3N R33E WM UMATILLA COUNTY

## 3N 33 23

SCALE 1" = 400'

See Map 3N 33



See Map 3N 33

See Map 3N 33

Revised 1/31/2025

See Map 3N 33

## 3N 33 23