

This map was prepared for Assessment & Taxation purposes only and was NOT prepared nor is it suitable for legal, engineering or surveying purposes.

# SEC 05 T3N R29E WM UMATILLA COUNTY

## 3N 29 05

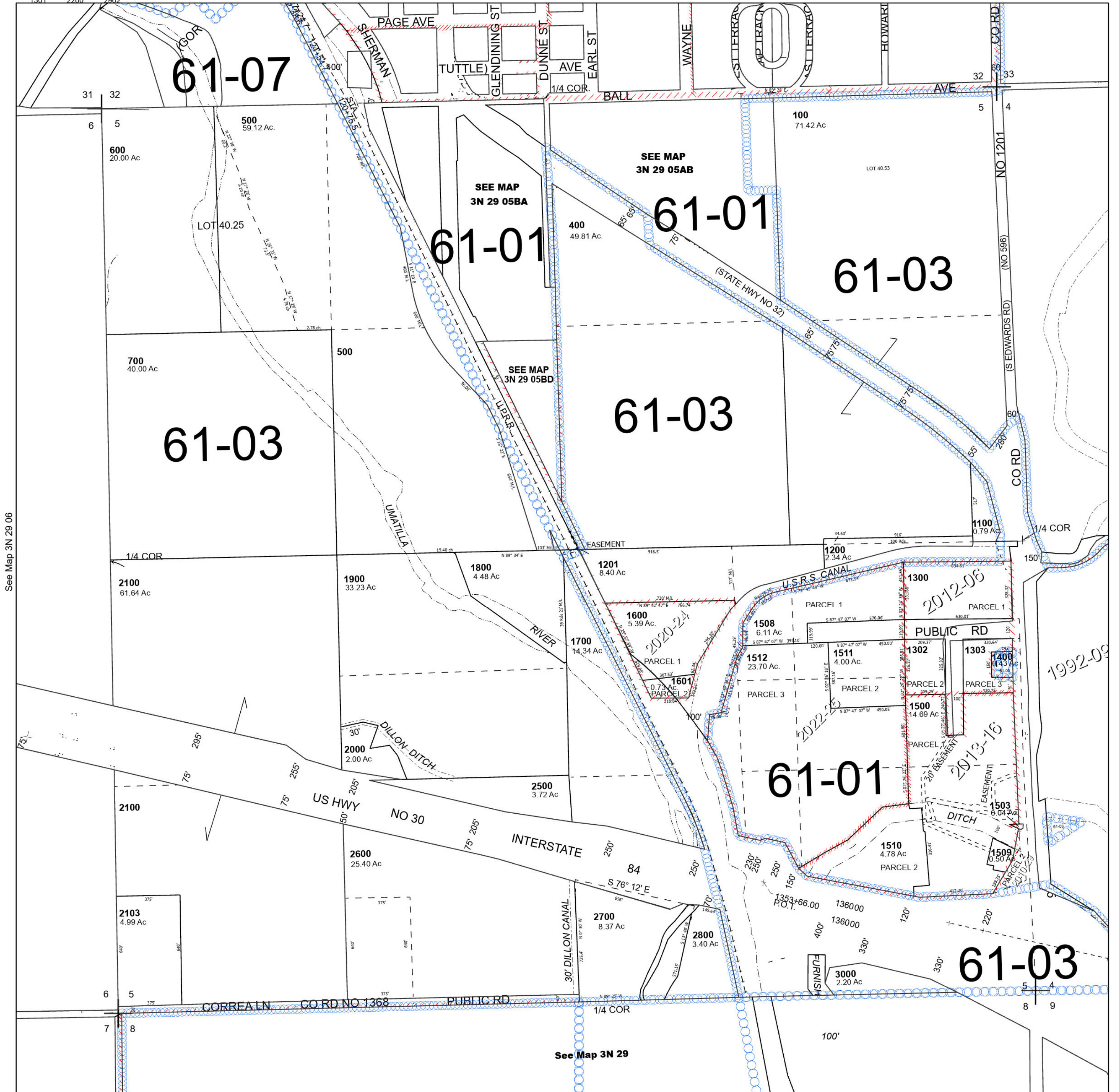
Stanfield

SCALE 1" = 400'

See Map 4N 29 32DC

### Cancelled Tax Lots

101	1401	2300	1702
102	1501	2400	900
200-204	1502	2501	
300-305	1504-1506	2601-2603	
401	1701	2900	
800	1703	2901	
1000	2001	2903	
1101	2101	3001	
1202	2102	3100	
1301	2200	2902	



See Map 3N 29 06

See Map 3N 29 04

Revised 6/13/2023

See Map 3N 29 08

## 3N 29 05