

This map was prepared for assessment purposes

NW1/4 SW1/4 SEC 27 T2N R32E WM  
UMATILLA COUNTY  
SCALE 1"=100'

9/12/06

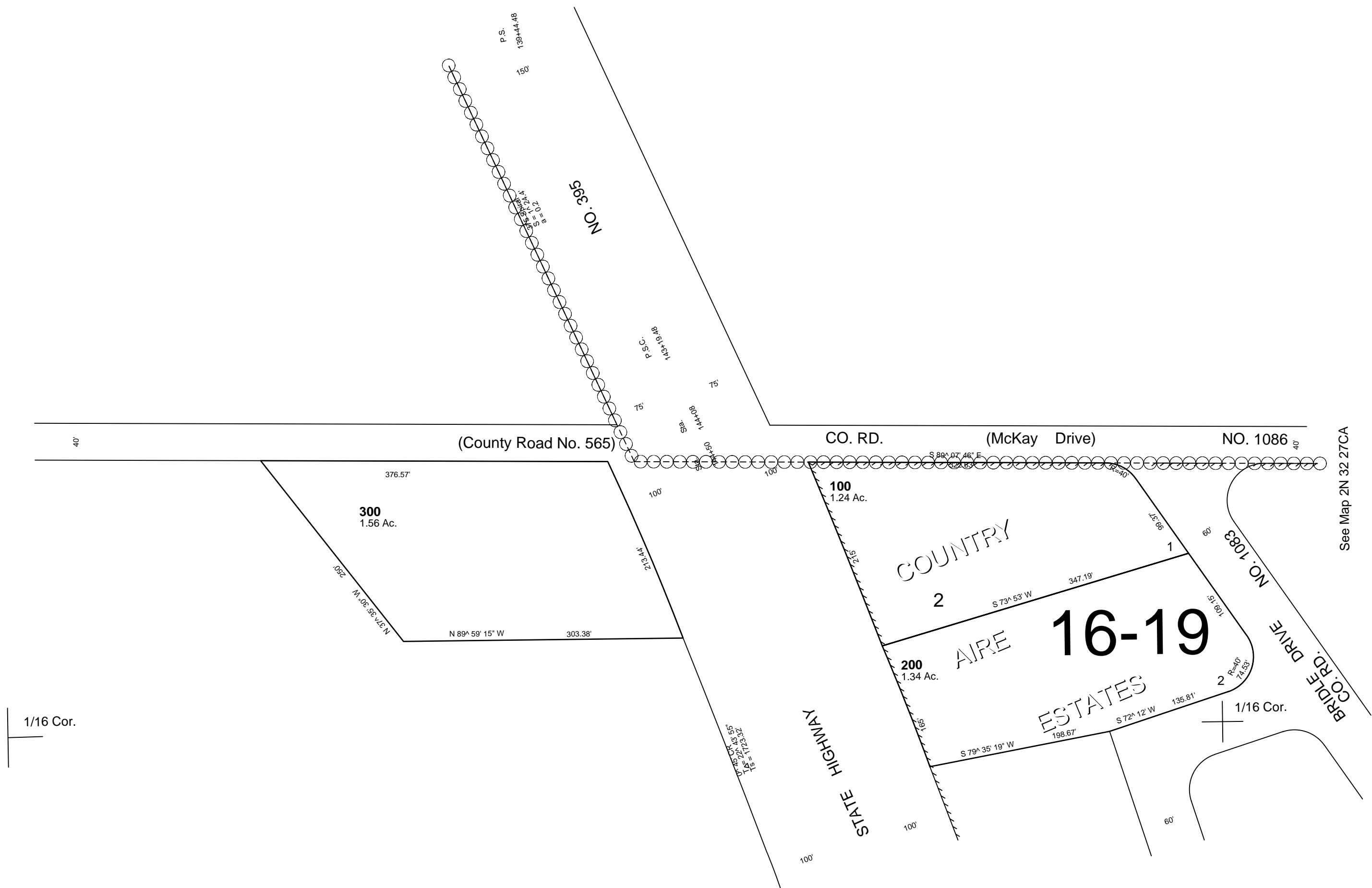
2N 32 27CB  
AERIAL PHOTO NO. 4P-59

1/4 Cor.

1/16 Cor.

See Map 2N 32 27

See Map 2N 32 28



See Map 2N 32 27CA

1/16 Cor.

1/16 Cor.

See Map 2N 32 27

2N 32 27CB