

This map was prepared for Assessment & Taxation purposes only and was NOT prepared nor is it suitable for legal, engineering or surveying purposes.

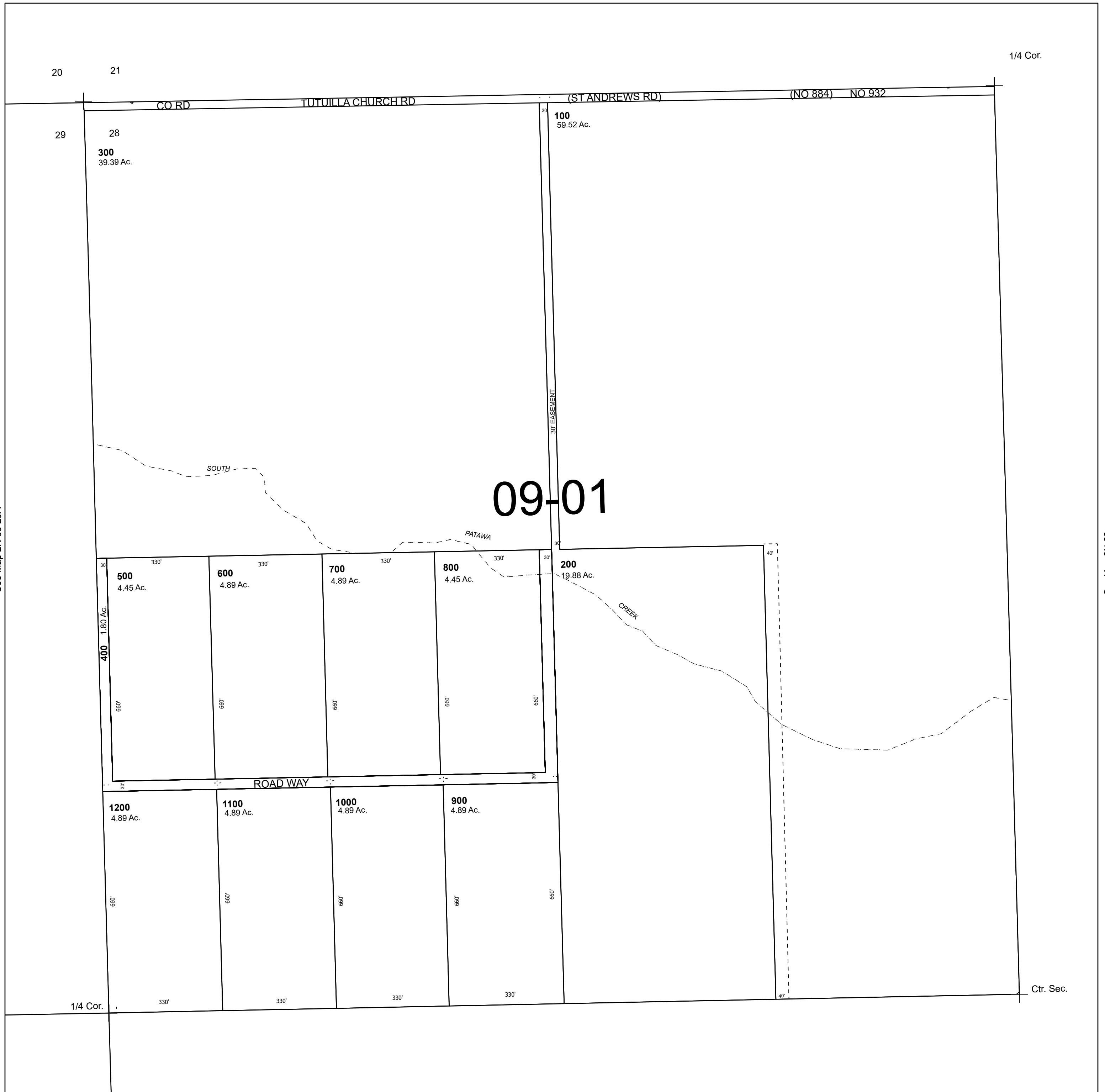
Cancelled Tax Lots

# NW 1/4 SEC 28 T2N R33E WM UMATILLA COUNTY

# 2N 33 28B

SCALE 1" = 200'

See Map 2N 33



See Map 2N 33 29A

See Map 2N 33