

This map was prepared for Assessment & Taxation purposes only and was NOT prepared nor is it suitable for legal, engineering or surveying purposes.

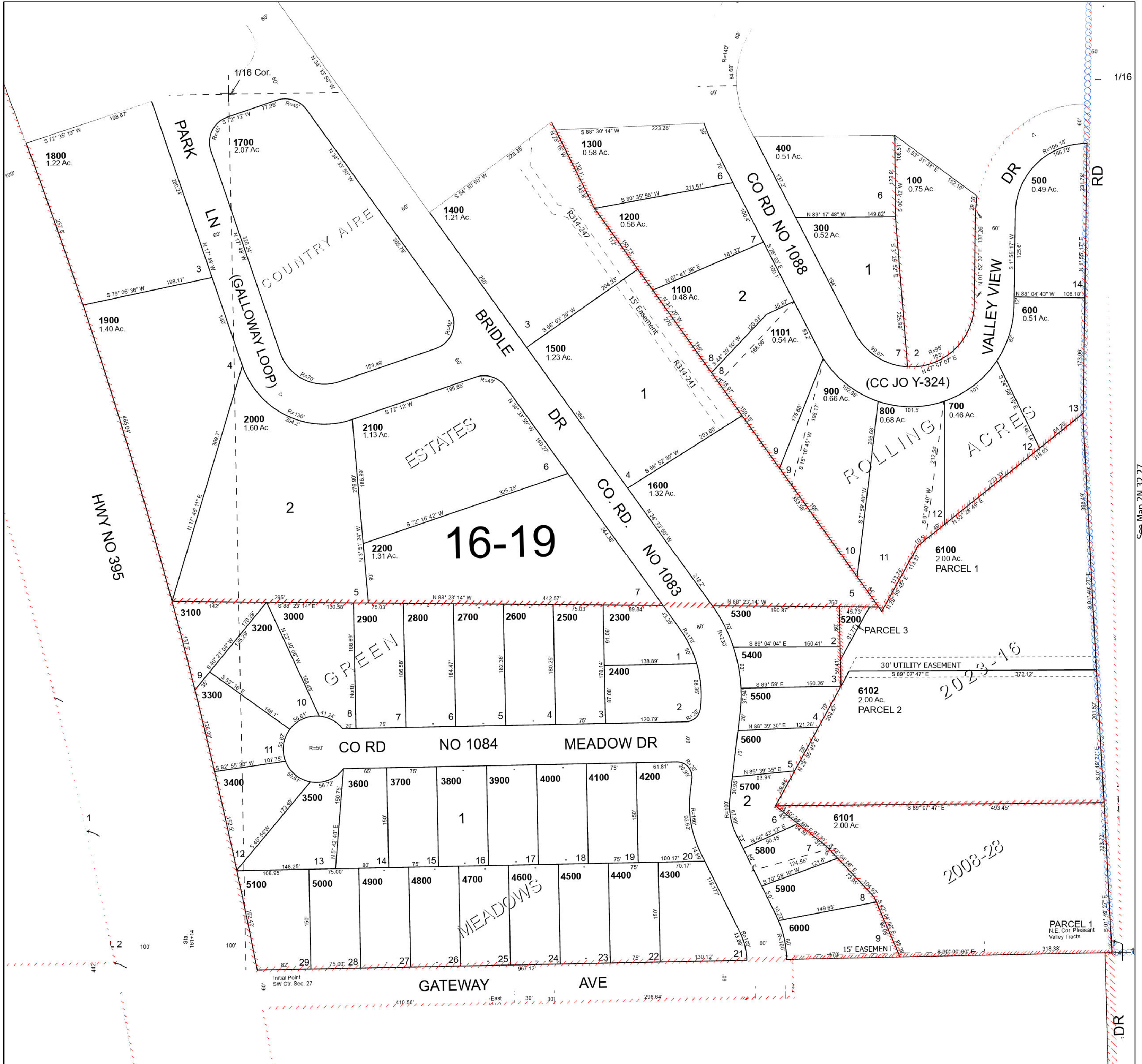
Cancelled Tax Lots

- 5801
- 5901
- 1001
- 701
- 1000
- 101
- 200

SE 1/4 SW 1/4 SEC 27 T2N R32E WM UMATILLA COUNTY SCALE 1" = 100'

See Map 2N 32 27CA

2N 32 27CD



See Map 2N 32 27CC

See Map 2N 32 27