

This map was prepared for Assessment & Taxation purposes only and was NOT prepared nor is it suitable for legal, engineering or surveying purposes.

Cancelled Tax Lots

100	12603
200	12605
300	12700
400	12701
500	12800
2901	12900
3500	13000
3600	13001
12600	
12602	

SW 1/4 NE 1/4 SEC 16 T2N R32E WM

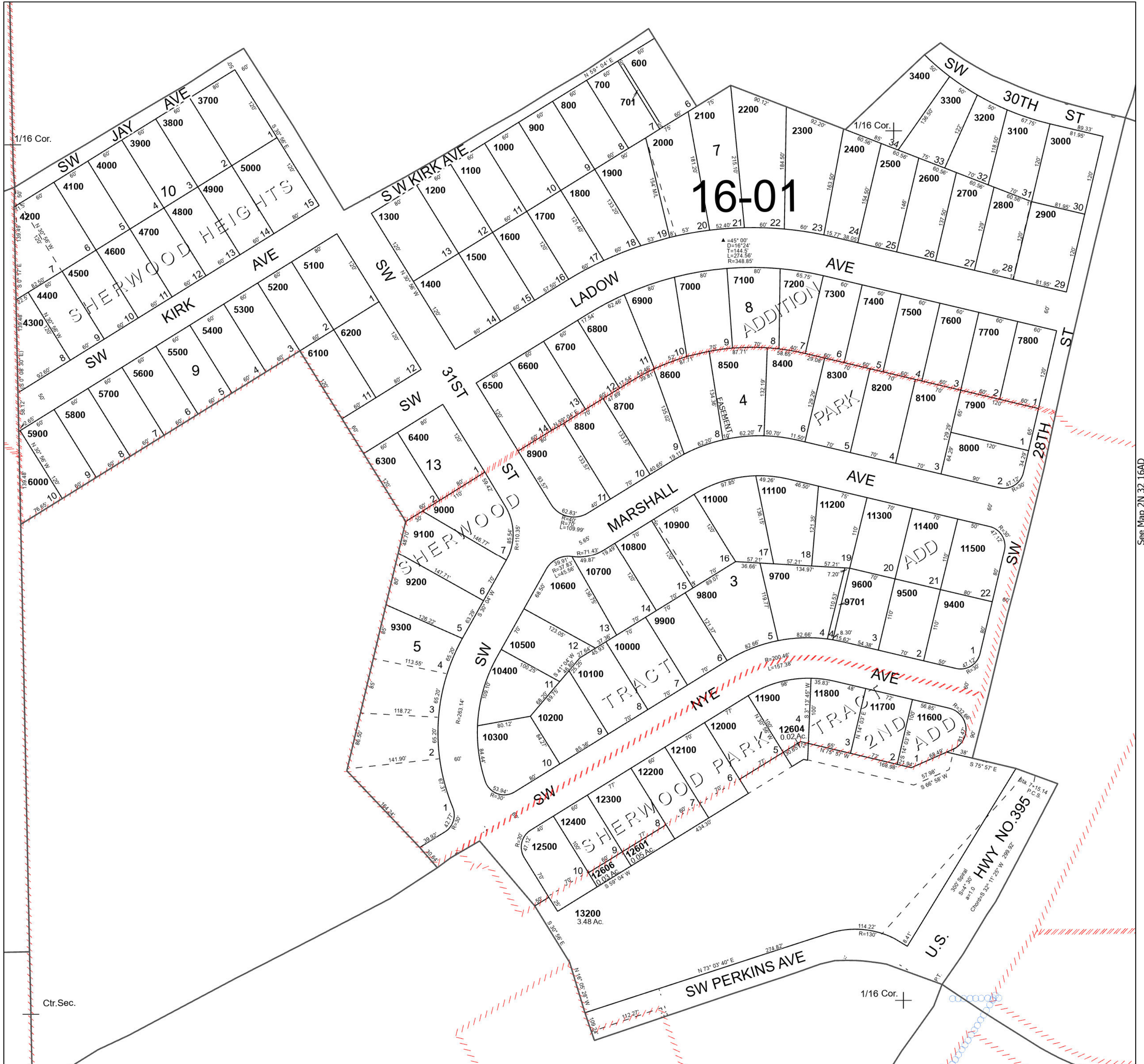
UMATILLA COUNTY

SCALE 1" = 100'

Pendleton

2N 32 16AC

See Map 2N 32 16AB



See Map 2N 32 16BD

See Map 2N 32 16AD