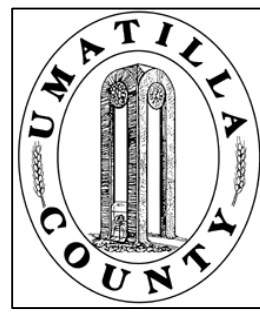


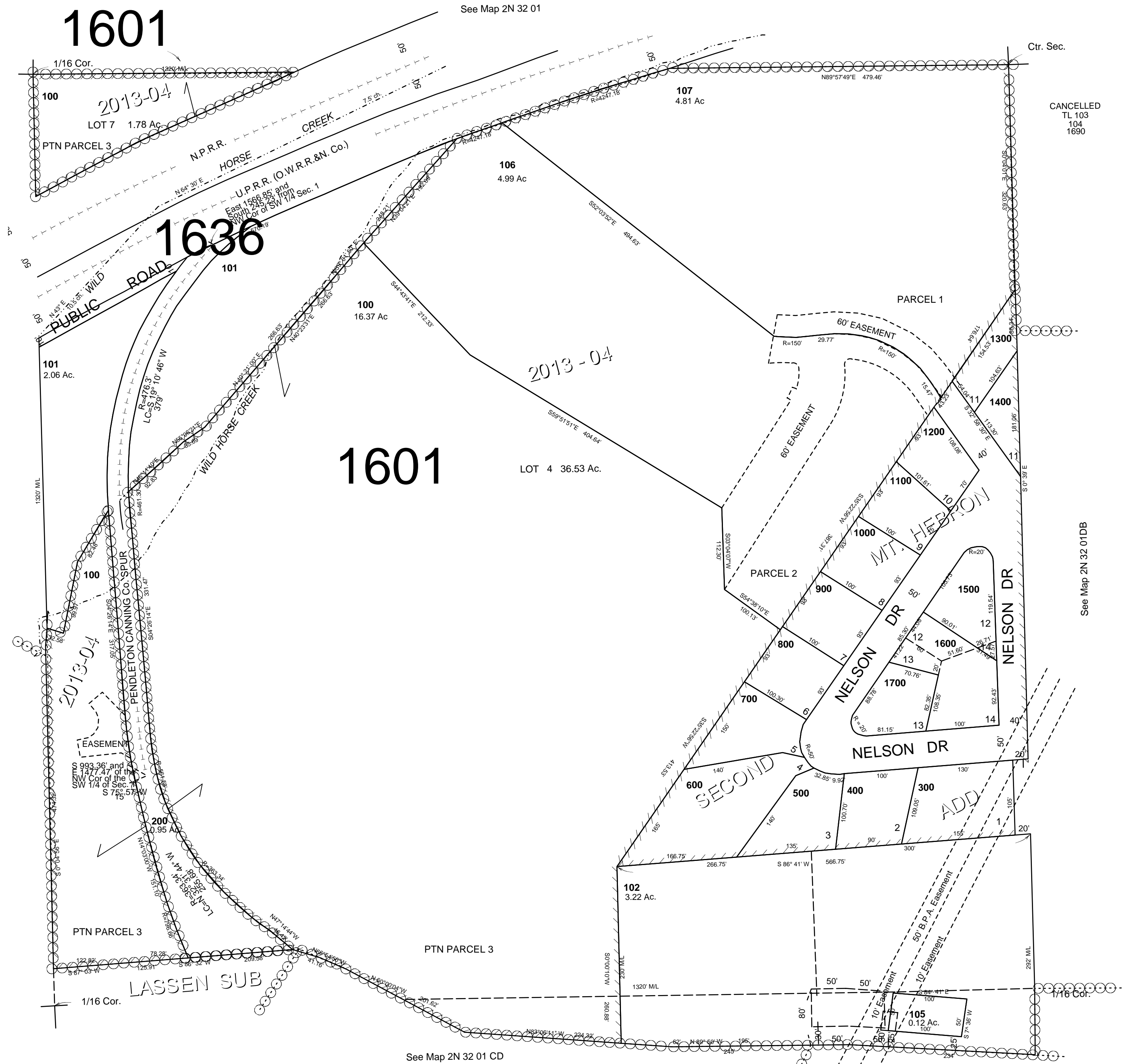
This map was prepared for Assessment & Taxation purposes only and was NOT prepared nor is it suitable for legal, engineering or surveying purposes.



NE1/4 SW1/4 SEC 1 T 2N R 32E WM  
 UMATILLA COUNTY  
 SCALE: 1" = 100'

2N 32 01CA

AERIAL PHOTO NO 4P-101



CANCELLED  
 TL 103  
 104  
 1690

See Map 2N 32 01DB

Revised: 09-22-14

2N 32 01CA