

This map was prepared for Assessment & Taxation purposes only and was NOT prepared nor is it suitable for legal, engineering or surveying purposes.

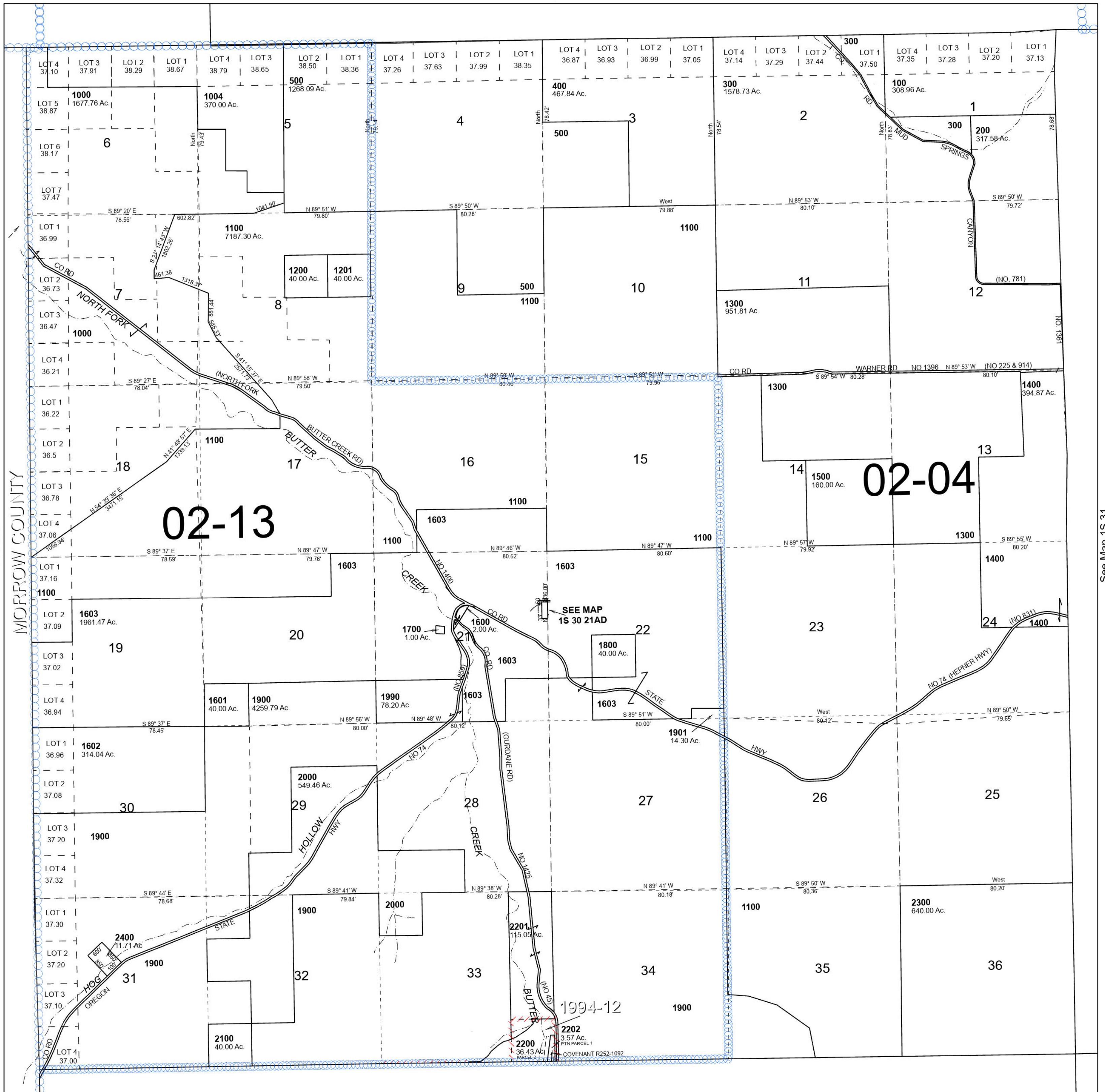
Cancelled Tax Lots

# T1S R30E WM UMATILLA COUNTY

# 1S 30

SCALE 1" = 2,000'

See Map 1N 30



See Map

MORROW COUNTY

See Map 1S 31